



Department of Environment and Coastal Resources (DECR)
Ministry of Tourism, Environment, Heritage and Culture (MTEHC)
Turks and Caicos Islands Government (TCIG)
Providenciales, Turks and Caicos Islands
environment@gov.tc/+1-649-338-4170 (Admin)/338-4161 (Director)



NOTICE OF CHANGES TO THE NATIONAL PARKS ORDER

Written representation can be sent by email to environment@gov.tc or delivered to DECR offices on Providenciales, Grand Turk, or South Caicos.

Oral representation can be made by telephone [+1-649-338-4161](tel:+1-649-338-4161) or in person through scheduling an appointment.

DEADLINE 16th FEBRUARY 2017

The proposed changes to the National Parks system include –

- Removal of sections of existing protected areas
- Extensions of existing protected areas
- Designation of existing protected areas (or parts thereof) under different categories of protection
- Establishment of new protected areas

These changes are summarized in this document.

Removal of sections of existing
protected areas

NR22 Pigeon Pond and Frenchman's Creek Nature Reserve

Current boundaries



Changes to boundaries

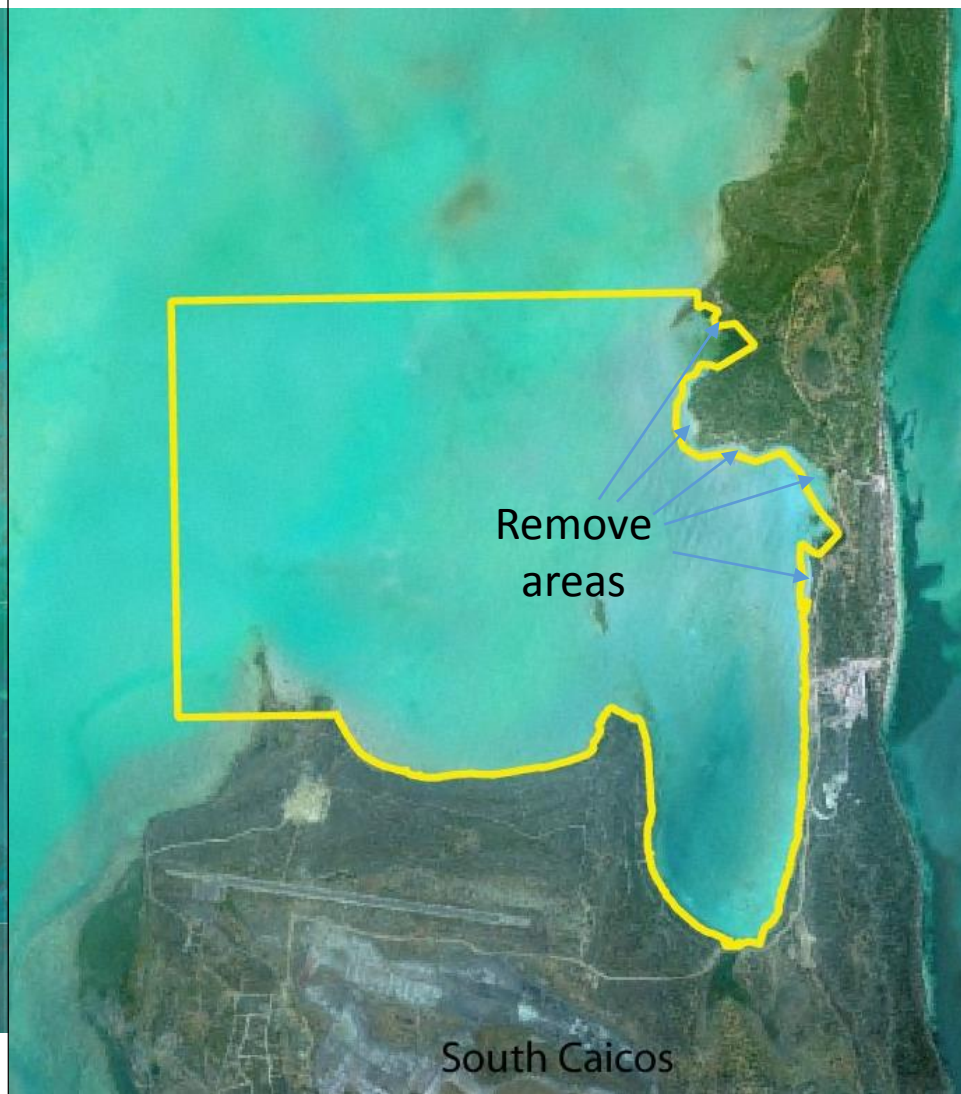


NP13 Bell Sound National Park

Current boundaries



Changes to boundaries



NP2 Chalk Sound National Park

Current boundaries



Changes to boundaries



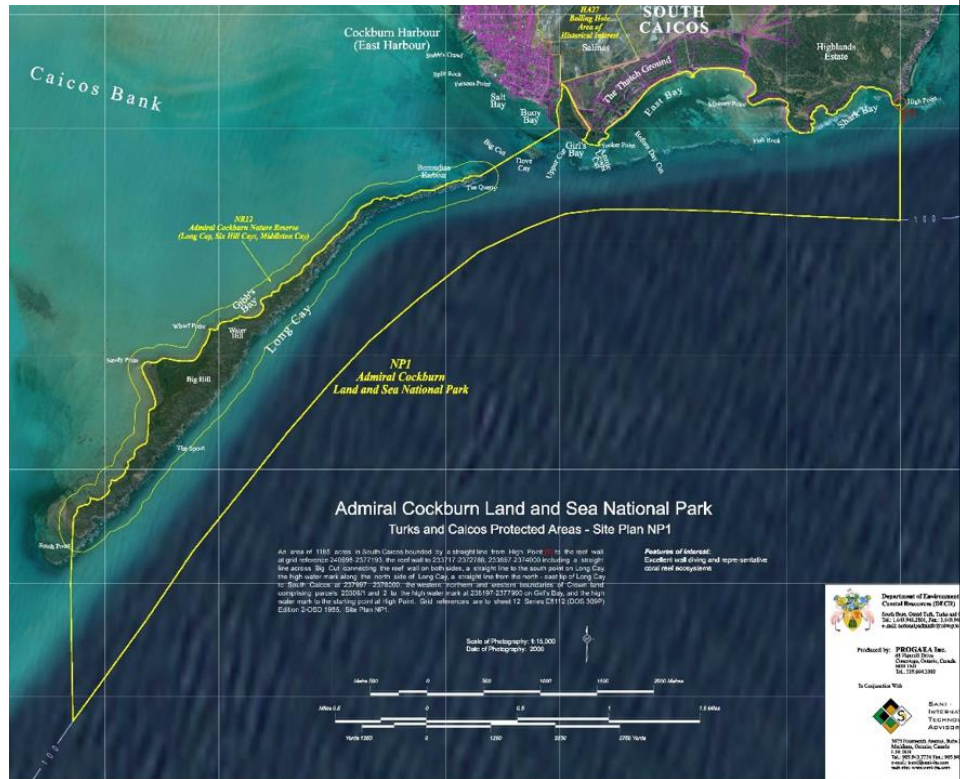
Extensions of existing protected areas

Extensions to Include Beach and Dune Habitats

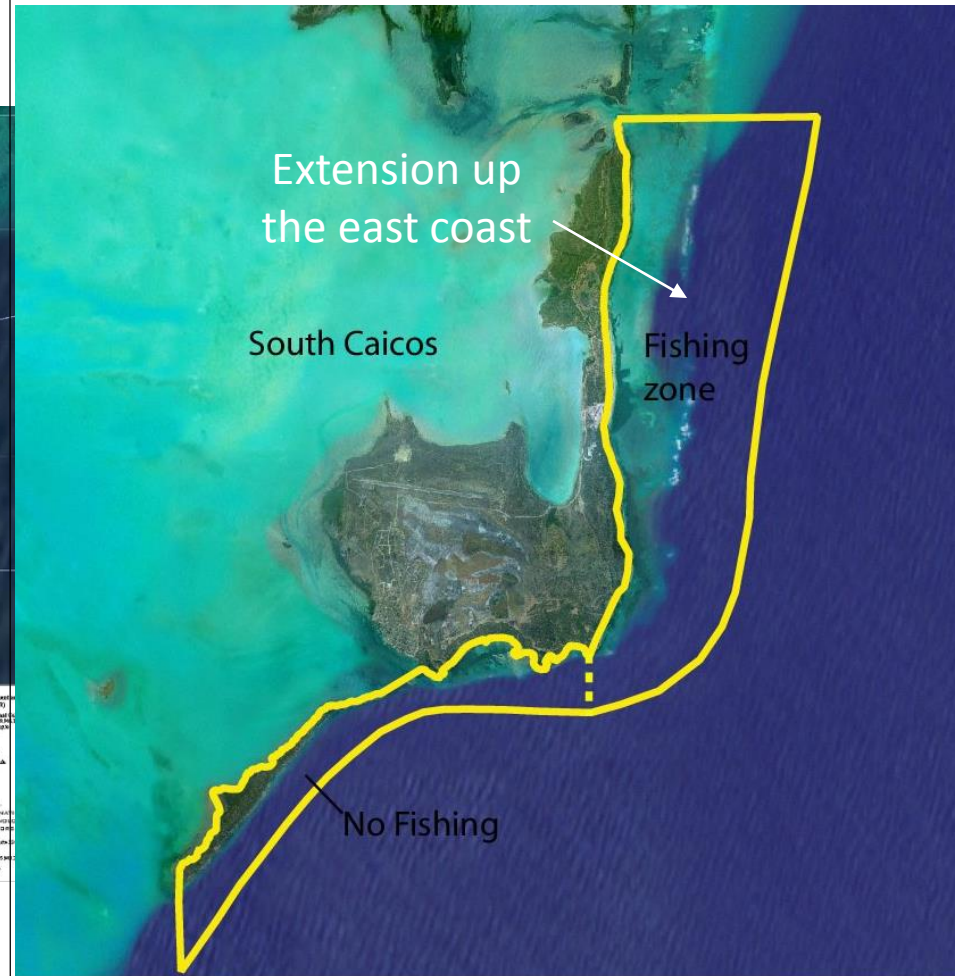
For all protected areas, where the boundary lies on the high water mark, this shall be extended to include the area up to the natural vegetation line. Where this boundary borders Crown Land that is dune habitat (and not under lease), the boundary shall be extended to landward margin of dune habitat within Crown Land.

NP1 Admiral Cockburn Land and Sea National Park

Current boundaries



Changes to boundaries



NP4 Conch Bar, Indian, Jacksonville and East Caicos Caves National Park

Current boundaries



Changes to boundaries

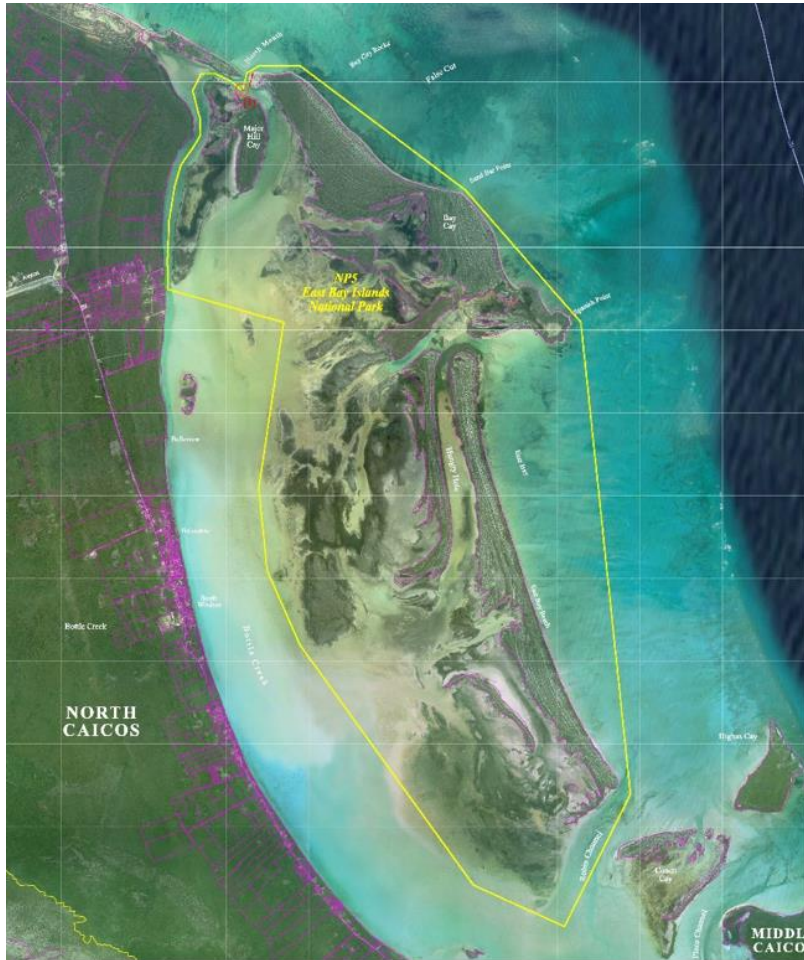


Additional cave areas included

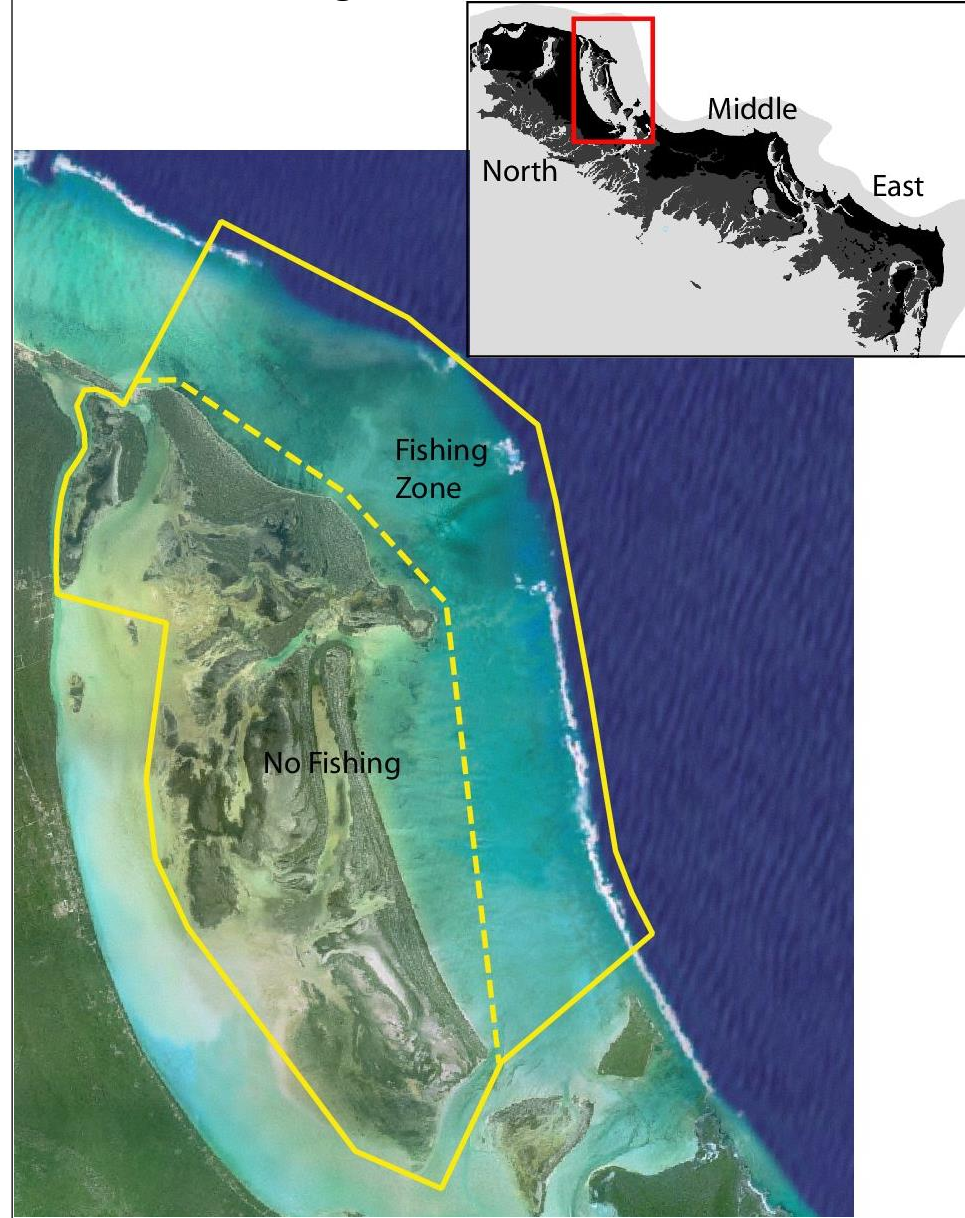


NP5 East Bay Islands National Park

Current boundaries

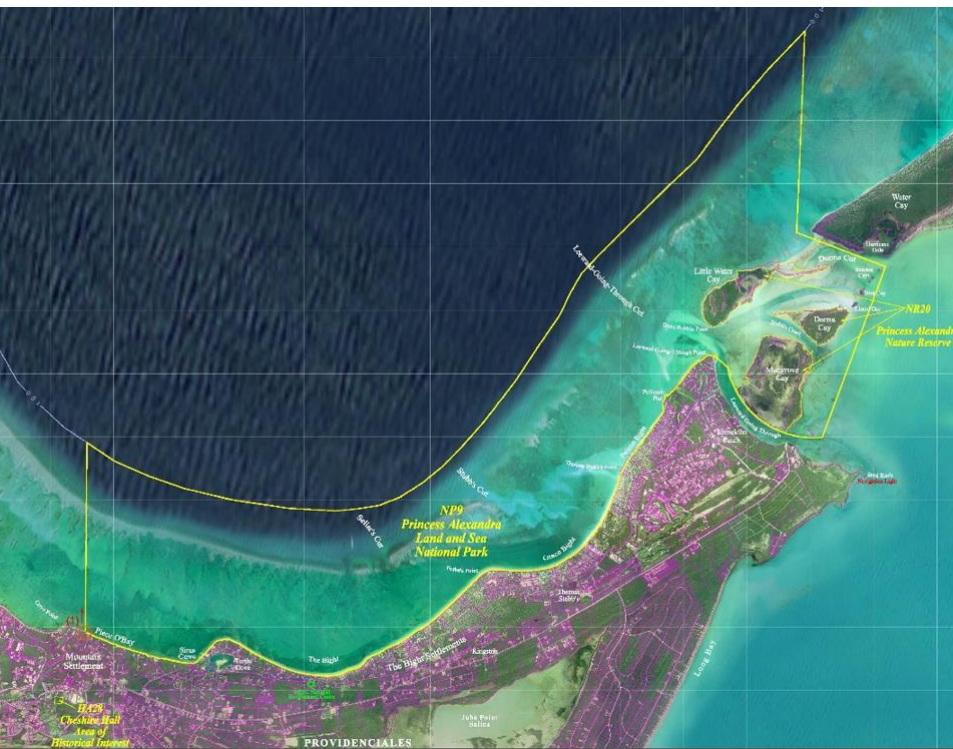


Changes to boundaries



NP9 Princess Alexandra Land and Sea National Park

Current boundaries



Changes to boundaries



NP11 West Caicos Marine National Park

Current boundaries



Changes to boundaries

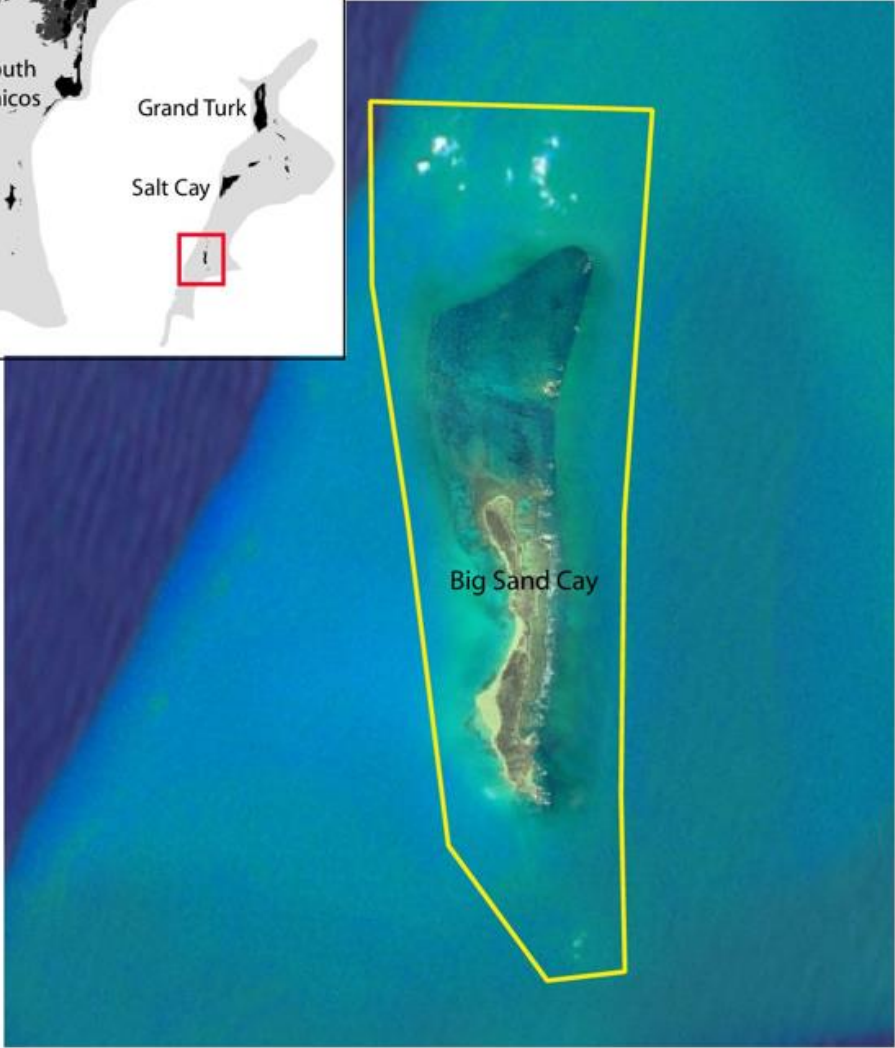


S32 Big Sand Cay Sanctuary

Current boundaries



Changes to boundaries



NR20 North Middle and East Caicos Nature Reserve (International Ramsar Site)

Current boundaries



Changes to boundaries



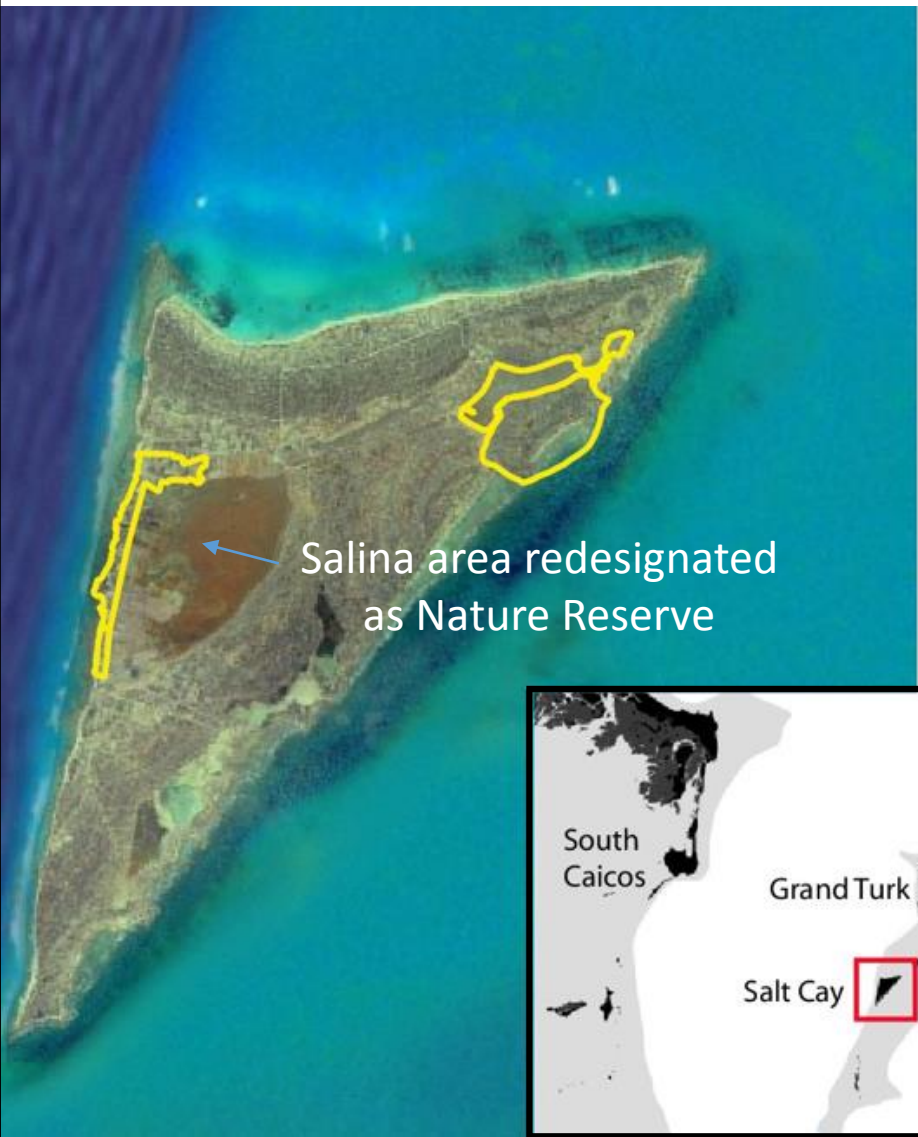
Extension into East Caicos

HA39 Salt Cay Area of Historical Interest

Current boundaries



Changes to boundaries

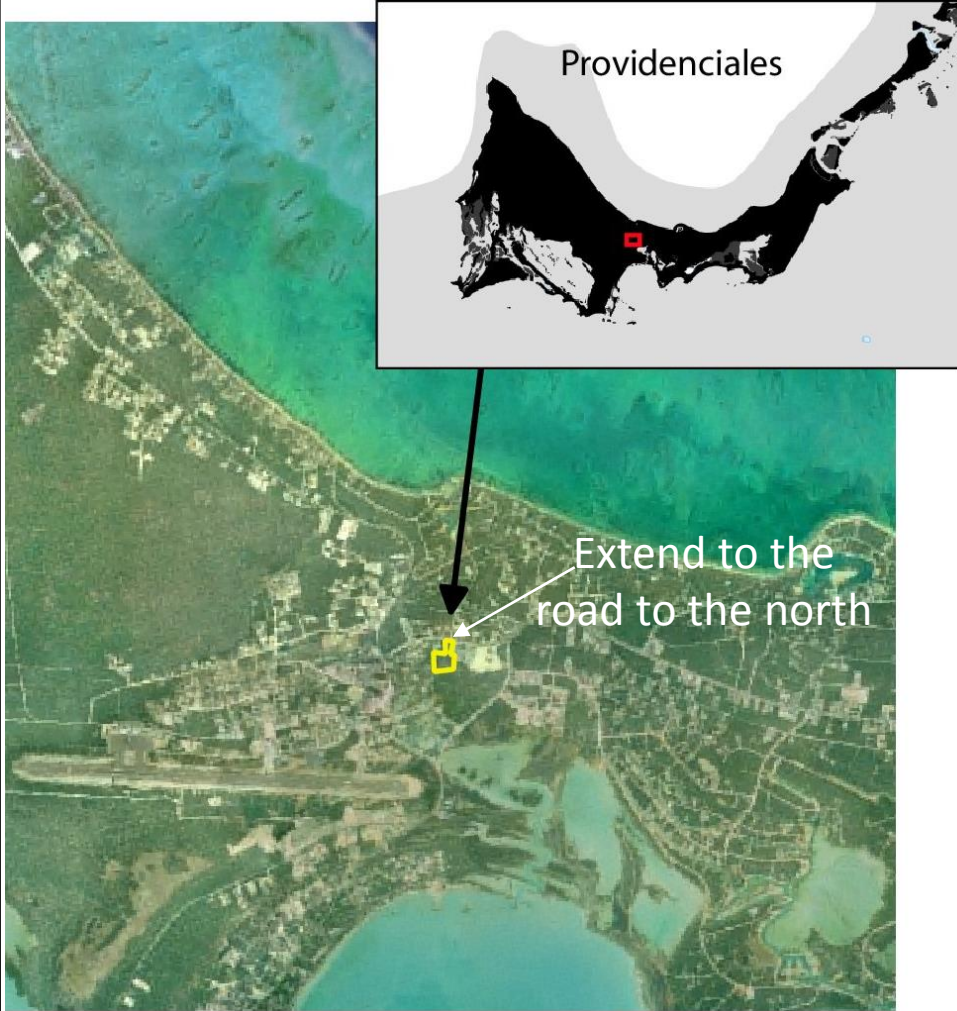


HA35 Cheshire Hall Area of Historical Interest

Current boundaries



Changes to boundaries



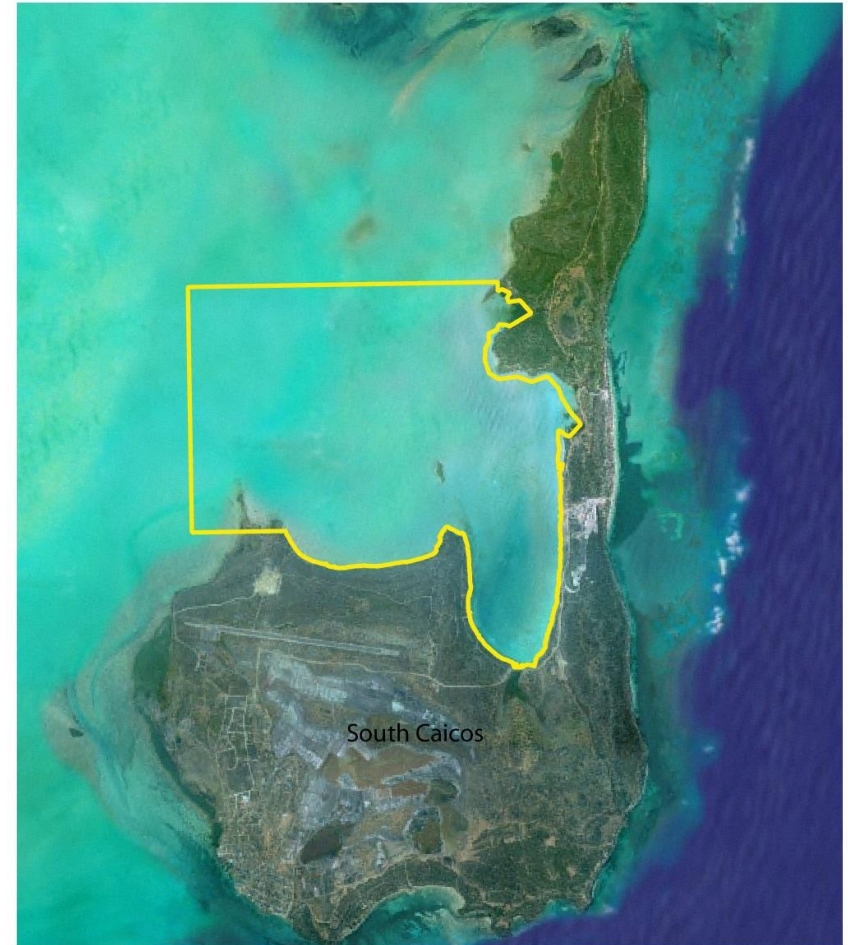
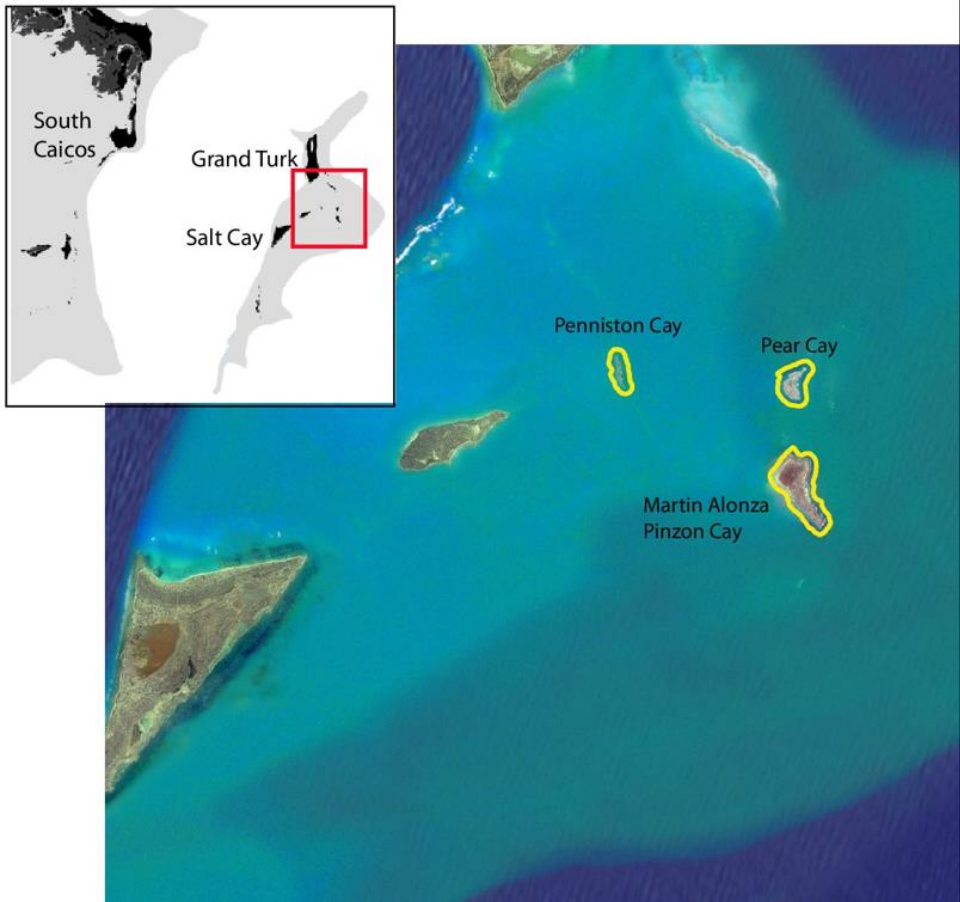
Designation of existing protected areas (or parts thereof) under different categories of protection

National Park becoming Nature Reserve

Nature Reserve becoming National Park

NR28 Grand Turk Cays Nature Reserve

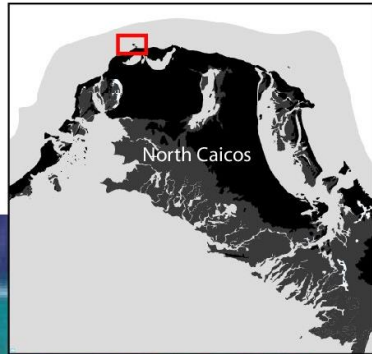
NP13 Bell Sound National Park



(Gibbs Cay remains a National Park)

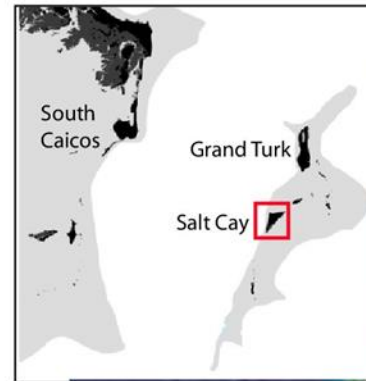
Sanctuary becoming National Park

NP12 Three Marys Cays National Park



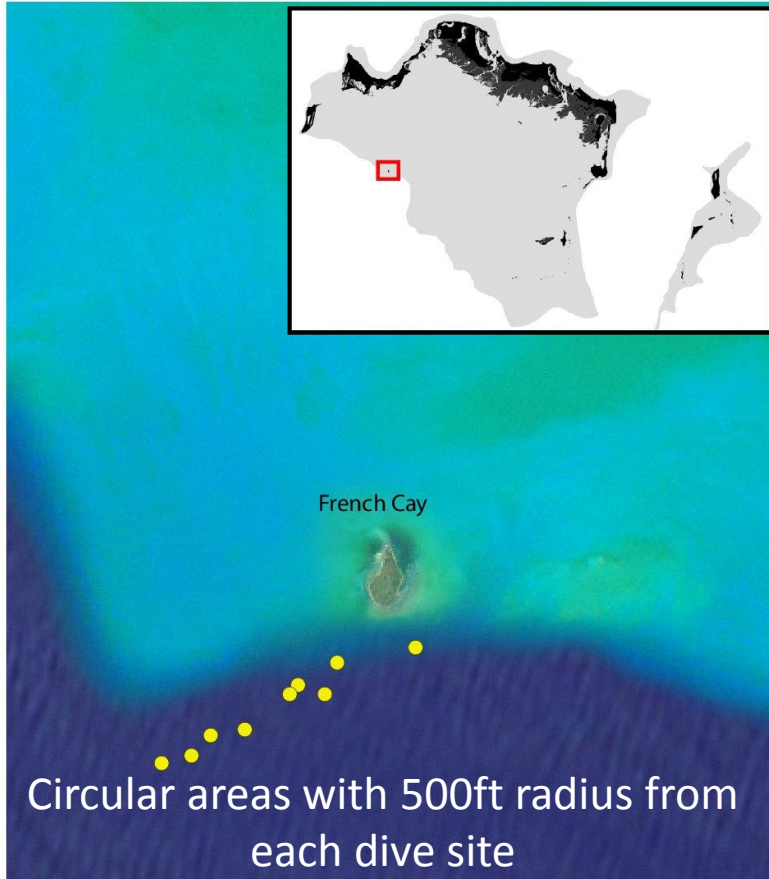
Area of Historical Interest becoming Nature Reserve

NR30 Salt Cay Nature Reserve

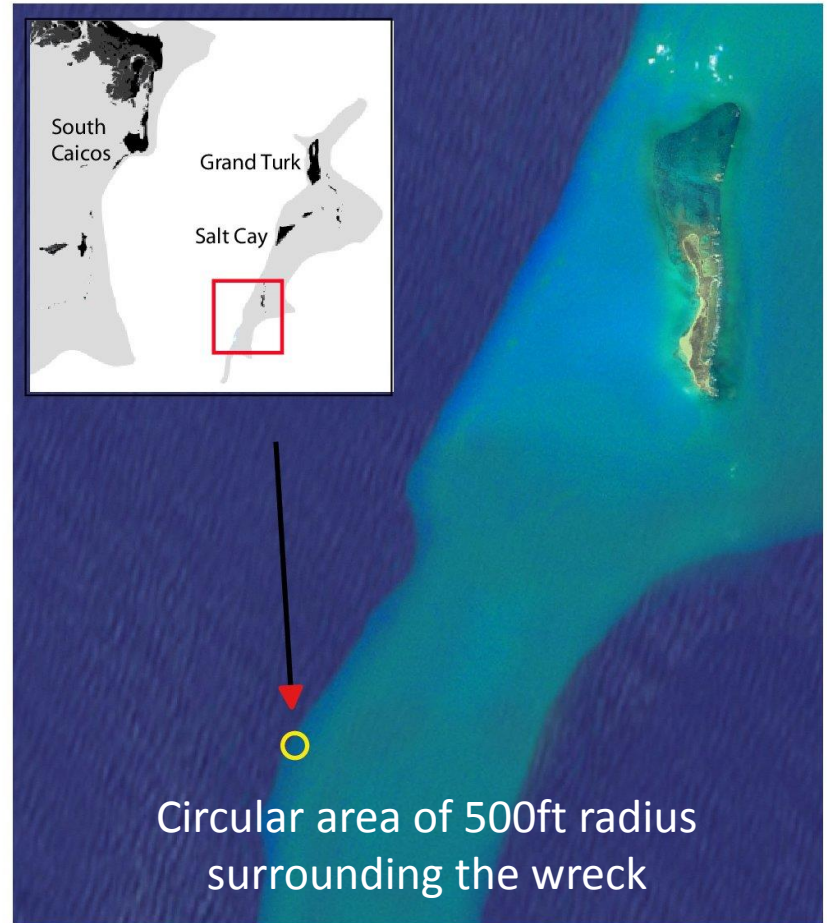


Establishment of new protected
areas

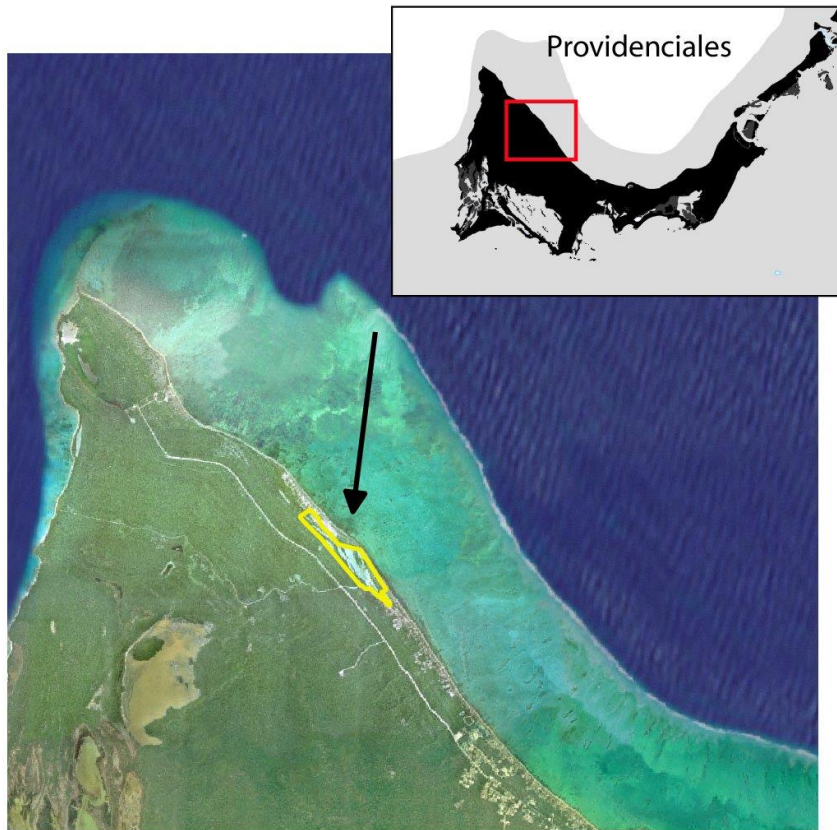
NP14- French Cay Dive Sites National Park



NP15- H.M.S. Endymion Wreck Area National Park



NR26- Wheeland Pond Nature Reserve



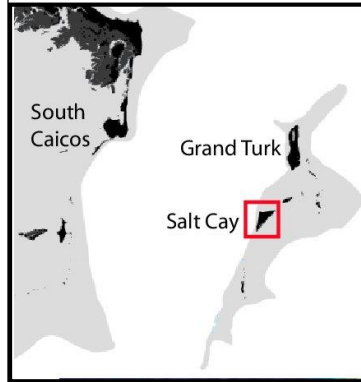
NR27- North and South Wells Nature Reserve



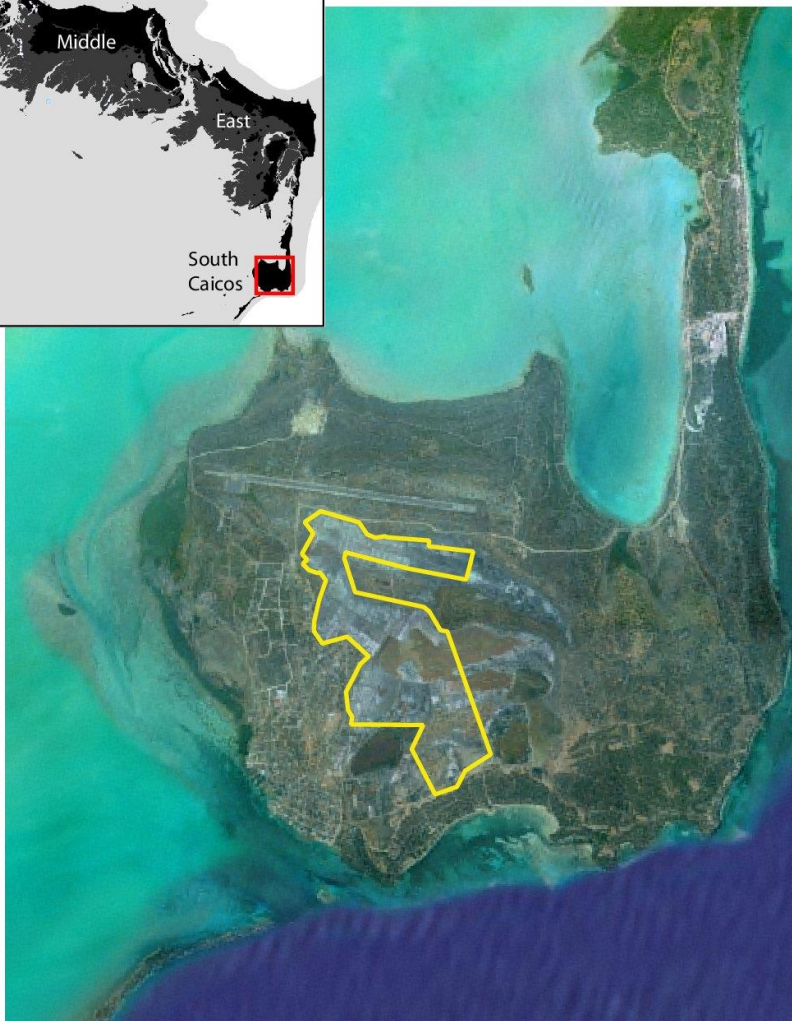
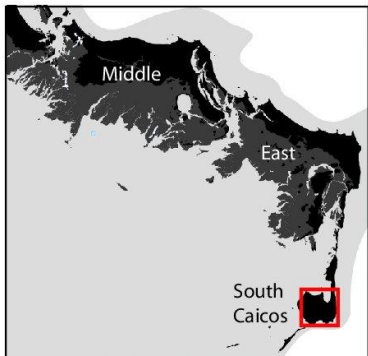
NR29- Little Ambergris Cay and Fish Cays Nature Reserve



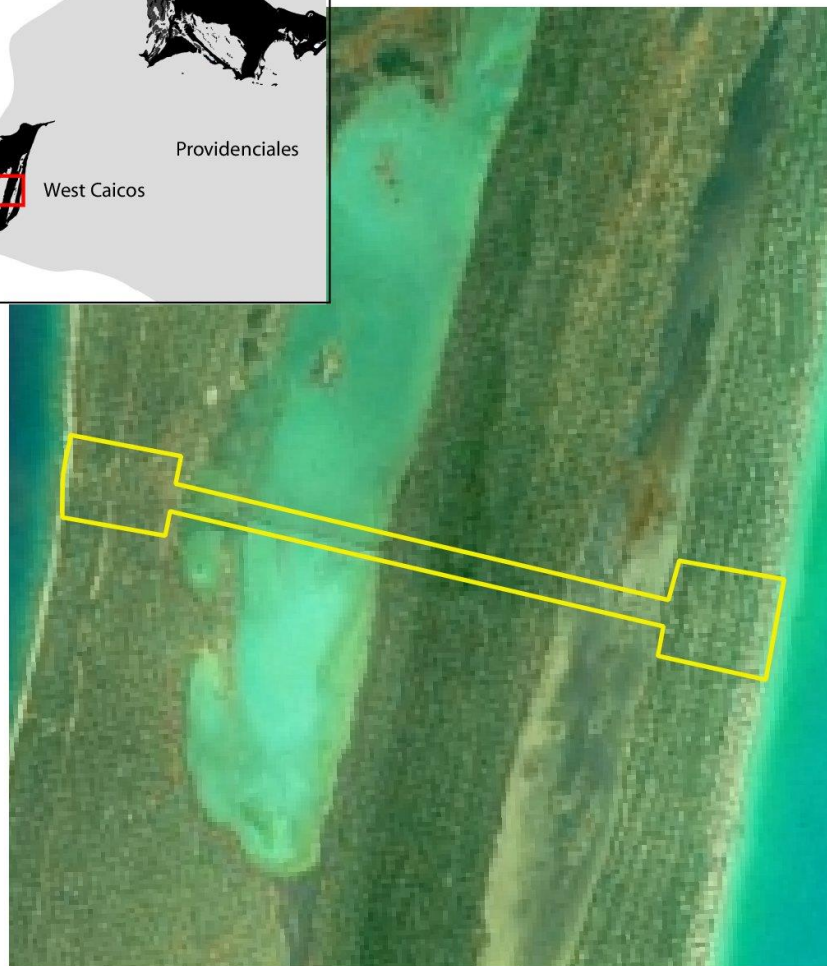
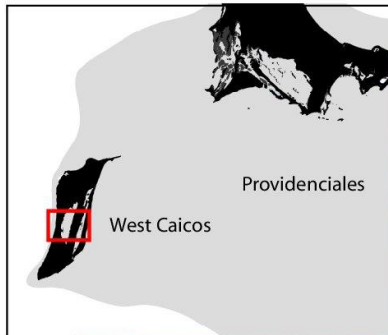
NR30- Salt Cay Area Nature Reserve



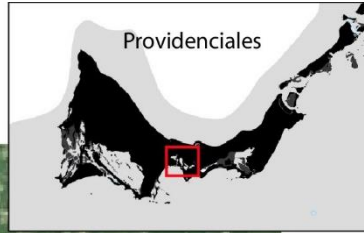
NR31- Boiling Hole Nature Reserve



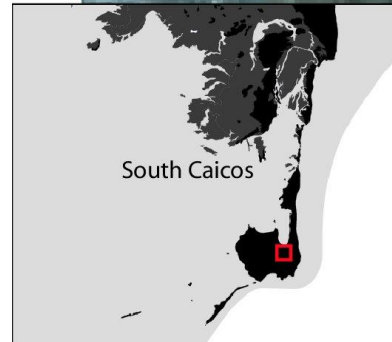
HA44- Yankee Town and Causeway Area of Historical Interest



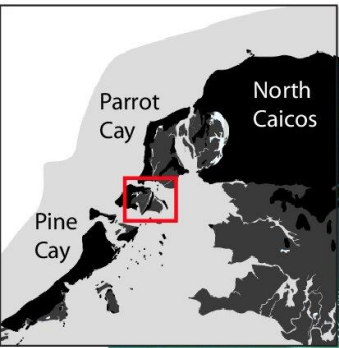
CHR45- Cheshire Hall Pond Critical Habitat Reserve



CHR46- Bell Sound Wetland Critical Habitat Reserve



CHR47- Leeward Islands Wetland Critical Habitat Reserve



CHR48- South Caicos Wetland Critical Habitat Reserve

