



Turks and Caicos Islands



Education Digest 2016 - 2017



Table of Contents

Table of Contents	2
List of Tables	2
List of Graphs	3
EDUCATION SECTOR OVERVIEW	4
SECTION 1: DISTRIBUTION OF SCHOOLS IN THE TURKS AND CAICOS ISLANDS	5
SECTION 2: STUDENT ENROLLMENT	12
SECTION 3: EXAMINATION DATA	21
SECTION 4: TEACHERS' STATISTICS	22
SECTION 5 – TERTIARY AND HIGHER EDUCATION	27
SECTION 6 – BUDGET ESTIMATES	30

List of Tables

Table 1: Private and Secondary School in the Turks and Caicos Islands 2016 - 2017	5
Table 2: Number of Schools in The TCI by School Type	8
Table 3: National Enrollment by School Type (by gender as reported by Principals)	9
Table 4: The total school population not classified by gender and age	9
Table 5: Private Primary Schools Enrollment by Grade	12
Table 6: Public Primary Schools Enrollment by Grade	13
Table 7: Public Secondary School Enrollment by Form	13
Table 8: Private Secondary School Enrollment by Form	14
Table 9: Secondary Level Students in the TCI by Gender, Grade and Age	14
Table 10: Primary school students in the TCI by grade, age and gender	16
Table 11: Number of student repeaters and drop outs in Primary Schools	17
Table 12: Number of student repeaters and drop out in Secondary Schools	18
Table 13: Number of student repeaters and drop outs in TCI schools	19
Table 14: Number of students with English as a Second Language	19
Table 15: Overall pass rates for Public and Private Grade Six Achievement Tests	21
Table 16: CSEC Examination Results by Gender (June 2017)	21
Table 17: CVQ Results (June 2017)	22
Table 18: Number of teachers in primary schools by sector and gender	22
Table 19: Number of teachers in secondary schools by sector and gender	23
Table 20: TCI Community College Areas of Study for Grand Turk and Providenciales Campuses 2016/2017	27
Table 21: TCICC Historical Graduation Data by Campus and Area of Study	29

List of Graphs

Graph 1: Distribution of Public and Private Schools in The TCI	8
Graph 2: Distribution of Schools in the TCI by School Type	9
Graph 3: Distribution of students by Gender within Schools in the TCI	10
Graph 4: Distribution of students by Gender in Private Schools in the TCI	10
Graph 5: Distribution of Primary School students in Public and Private Schools	11
Graph 6: Distribution of students by Secondary students in Public and Private Schools	11
Graph 7: Distribution of students transitioning normally, repeaters and drop outs in Primary Schools	18
Graph 8: Distribution of students transitioning normally, repeaters and drop outs in Secondary Schools	18
Graph 9: Distribution of students transitioning normally, repeaters and drop outs in the TCI	19
Graph 10: Distribution of students with English as a Second Language (ESL) compared with First Language Learners (FLL) in the Turks and Caicos Islands	20
Graph 11: Distribution of students with English as a Second Language (ESL) compared with First Language Learners (FLL) in Primary Schools the Turks and Caicos Islands	20
Graph 12: CSEC Examination Results by Gender (June 2017)	21
Graph 13: Comparison of number of primary school teachers by gender and sector in the TCI	22
Graph 14: Comparison of number of secondary school teachers by gender and sector in the TCI	23
Graph 15: Distribution of TCI Community College areas of study for Grand Turk and Providenciales campuses 2016/2017	28
Graph 16: Distribution of Tertiary Education Fund by year	28

EDUCATION SECTOR OVERVIEW

Turks and Caicos Islands – its education system

The Turks and Caicos Islands have an educational system that dates back to the immediate post-emancipation period in the early 1840s. For more than a century, a primary focus of the government was to provide primary education for all members of the population.

Following the Second World War, the thrust to expand secondary education that was witnessed in the rest of the Caribbean did not leave the TCI untouched, and as devolution of control to local legislature evolved, the representatives of the people insisted on the expansion of secondary education as a prime objective of government policy. This effort on the part of the state was complemented by the work of religious organizations that responded to the demand for secondary education in 1921.

It was only a matter of time before interest in access to tertiary education and postsecondary training would have led to the establishment of the required structures. By 1994 TCI had established its own Community College. It could be said that the country now has a well-articulated educational system spanning all the levels of education, even though at the highest level, the post-secondary and tertiary sector is still in the process of emerging.

The Legal Framework

The Education Ordinance, Chapter 100 of the Laws of the Turks and Caicos, is the primary legislation underpinning the operation of the educational system of TCI. The Ordinance confers power on the Minister of Education to promote the education system of the Islands by the establishment of institutions devoted to the development of the human resources of the community.

The ordinance recognises three stages of public education – primary, secondary and tertiary - but makes provision for pre-school, special, adult, technical or vocational and health and family life education.

The school system is recognised to be comprised of a public or private system. The Minister is enjoined to provide such number of public schools as is necessary to secure a place for all students in the compulsory school age group – from four to sixteen years of age (Education Ordinance).

SECTION 1: DISTRIBUTION OF SCHOOLS IN THE TURKS AND CAICOS ISLANDS

Table 1: Private and Secondary School in the Turks and Caicos Islands 2016 - 2017

Type	School	Address	Principal	Phone	Fax	Email
	PUBLIC SCHOOLS					
Primary	Adelaide Oemler Primary School	Bottle Creek, North Caicos	Mrs. Darlene Lightbourne	946-7218	946-7218	adelaidoemlerprimary@tciedu.tc
Primary	Charles Hubert James Primary School	Kew, North Caicos	Mrs. Commancita Morley	946-7373	946-7373	charleshubertjamesprimary@tciedu.tc
Secondary	Clement Howell High School	Blue Hills, Providenciales	Mrs. Kaden Cunningham	941-3411	941-3685	clementhowellhigh@tciedu.tc
Primary	Doris Robinson Primary School	Conch Bar, Middle Caicos	Ms. Brendalee Harvey (Acting)	946-6137	946-6137	dorisrobinsonprimary@tciedu.tc
Primary	Eliza Simons Primary School	Grand Turk	Mrs. Juliet Thelwell	946-2334	946-2334	elizasimonsprimary@tciedu.tc
Primary	Enid Capron Primary School	Five Cays, Providenciales	Mrs. Sophia Garland	946-4243	946-4243	enidcapronprimary@tciedu.tc
Secondary	H.J. Robinson High School	Church Folly, Grand Turk	Mr. Reinwald Lewis	946-2317	946-2862	hjrobinsonhigh@tciedu.tc
Primary	Ianthe Pratt Primary School	The Bight, Providenciales	Ms. Neekimo King	946-4165	946-4165	iantheprattprimary@tciedu.tc
Primary	Iris Stubbs Primary School	South Caicos	Mrs. Earleen Elliot	946-3256	946-3222	irisstubbsprimary@tciedu.tc
Secondary	Long Bay High	Providenciales	Mrs. Kordell Forbes (Acting)	946-5275		longbayhigh@tciedu.tc

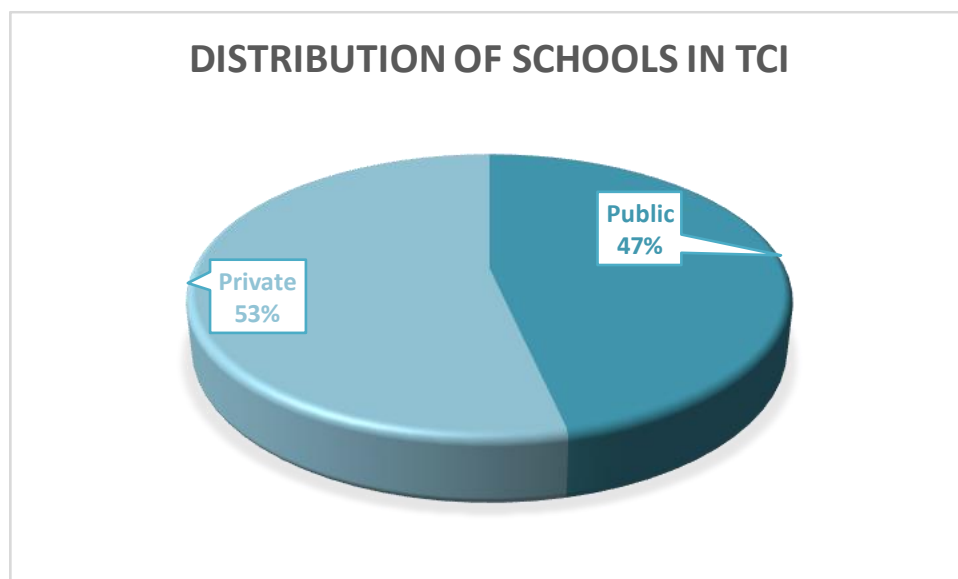
Secondary	Marjorie Basden High School	South Caicos	Mr. Rodney Cox (Acting)	946-3361	946-3361	marjoribasdenhigh@tciedu.tc
Primary	Mary Robinson Primary School	Salt Cay	Mrs. Shyvonne Ernest (Acting)	946-6982 / 331-7447	946-6915	maryrobinsonprimary@tciedu.tc
Primary	Ona Ginton Primary School	Grand Turk	Mrs. Gwen Harvey	946-2337	946-2337	onagintonprimary@tciedu.tc
Primary	Oseta Jolly Primary School	Blue Hills, Providenciales	Mrs. Rachel Handfield	941-3370	941-3370	osetajollyprimary@tciedu.tc
Secondary	Raymond Gardiner High School	Bottle Creek, North Caicos	Mrs. Janet Walkin	946-7132	946-7757	raymondgardinerhigh@tciedu.tc
	PRIVATE SCHOOLS					
Pre / Primary	Alpha Christian Academy	Leonie Plaza, Leeward Highway	Mrs. Nikki Hanna	241-2350	941-4434	nikkihanna545@hotmail.com
Pre / Primary	B.E.S.T. Institute	Wheeland, Providenciales	Mr. Leonard Glasgow	941-4802	941-5118	bestinstitute@tciway.tc
Pre / Primary	BRIC's Academy	Blue Hills, Providenciales	Mrs. Marjorie Bassett	241-2968		mardi_bassett@hotmail.com
Secondary & Grade 6	British West Indies Collegiate	Venetian Road, Providenciales	Mrs. Sylvie Wigglesworth	941-3333	941-3332	principal@bwic.tc
Pre / Primary (to G. 2)	Calvary Christian School	St. Patrick Street, South Caicos	Mrs. Sharon Minott	241-0682		minott@tciway.tc
Primary / Secondary	Champions For Christ International School of Excellence	Industrial Park, Providenciales	Mrs. Alleveia Chan Jon Chu	339-4903		championsforchristtci@gmail.com
Pre / Primary	Community Christian Academy	Leeward Highway, Providenciales	Mrs. Gayle Cesar	941-3484	941-3482	ccademy2008@gmail.com
Secondary	Elite High School	Five Cays, Providenciales	Dr. Edward Smith	245-8334		eliteschoolsystems2016@gmail

Learning Support	Extended Learning Centre (dba TCI Middle School)	Richmond Hill, Providenciales	Mr. Mark Dunbavand	331-1519 /231-1519		principal@tcimiddleschool.com
Primary / Secondary	Holy Family Academy	Kew Town, Norway, Providenciales	Ms. Maria Mera	941-7875	941-7875	holyfamilytci@gmail.com
Pre / Primary	International School of the TCI	Leeward, Providenciales	Ms. Katie Hinks	946-5523	941-4614	khinks@internationalchooltci.com
All Age	Lighthouse Christian School	Bottle Creek, North Caicos	Mrs. Diane Smith	242-7442		sunshinedi_smith@hotmail.com
Daycare / Pre / Primary	M.I.L.L.S. Institute	Long Bay Road, Providenciales	Mrs. DebbyLee Mills	232-8316	946-5563	millsinstitute@gmail.com
Secondary	Maranatha High School	Millenium Highway, Providenciales	Mr. Reinford Trail	946-4385	941-5829	contact@maranathaacademy.tc
Pre / Primary	Faith Preparatory	Godett Allotment, Grand Turk	Mr. Roy Lindsay	946-2849	946-2849	newmanpreparatory@yahoo.com
Daycare / Pre / Primary	Precious Treasures Pre & Primary School	Industrial Park, Providenciales	Mrs. Anniona Jones	941-5186 /232-7847	946-4856	principal@precioustreasuresschool.com
Primary	Providence International Academy Turks and Caicos	Leeward Highway, Providenciales	Mr. Oniel Chung	243-5616		admin@piatci.com
Pre / Primary	Provo Christian School	Stammers Run, Providenciales	Mrs. Sophia McPherson	941-5775	941-7373	provochristianschool@hotmail.com
Pre / Primary	Providenciales Primary School	Flamingo Park, Providenciales	Mrs. Sian Jones	441-5638		principal@provoprimary.com
Pre / Primary	Richmond Hills Preparatory	Richmond Hills, Providenciales	Mrs. Lynn Smith	946-4957	946-4957	richhillprep@yahoo.com
Pre / Primary	Shining Stars Preparatory	Downtown, Providenciales	Mr. Daniel Morgan	941-4819	941-4819	globlar@yahoo.com

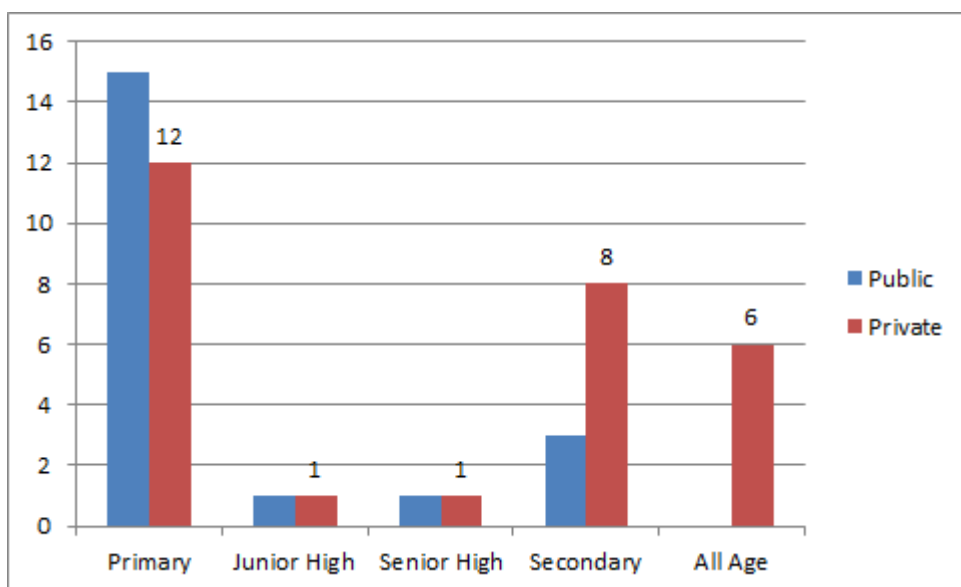
Primary	Susanna Wesley Christian Academy	Pond Street, Grand Turk	Ms. Tracey Clarke	946-1618	946-1868	susannawesley09@hotmail.com
Secondary	TCIPS Comprehensive High	Downtown, Providenciales	Mr. Daniel Morgan	339-8177	946-8245	admin@tcips.org
All Age	Wesley Methodist School	Leeward Palms, Providenciales	Mrs. Edna Cottoy	941-4791	946-4163	wesleyschool@tciway.tc

Table 2: Number of Schools in The TCI by School Type

School Type	Public	Private	Total
Primary	15	12	27
Junior	1	0	1
Senior	1	0	1
Secondary	3	5	8
All-Age	0	6	6
Total	20	23	43



Graph 1: Distribution of Public and Private Schools in The TCI



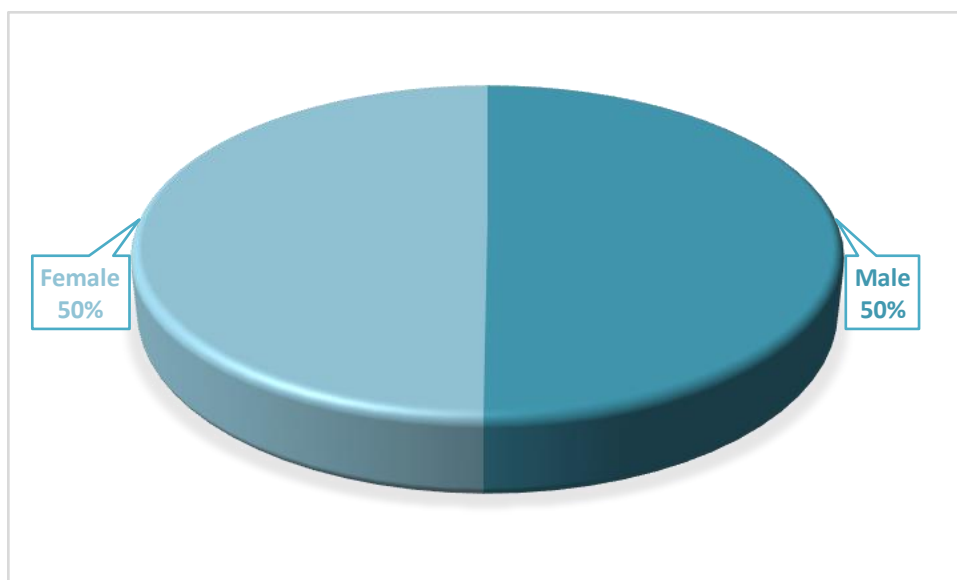
Graph 2: Distribution of Schools in the TCI by School Type

Table 3: National Enrollment by School Type (by gender as reported by Principals)

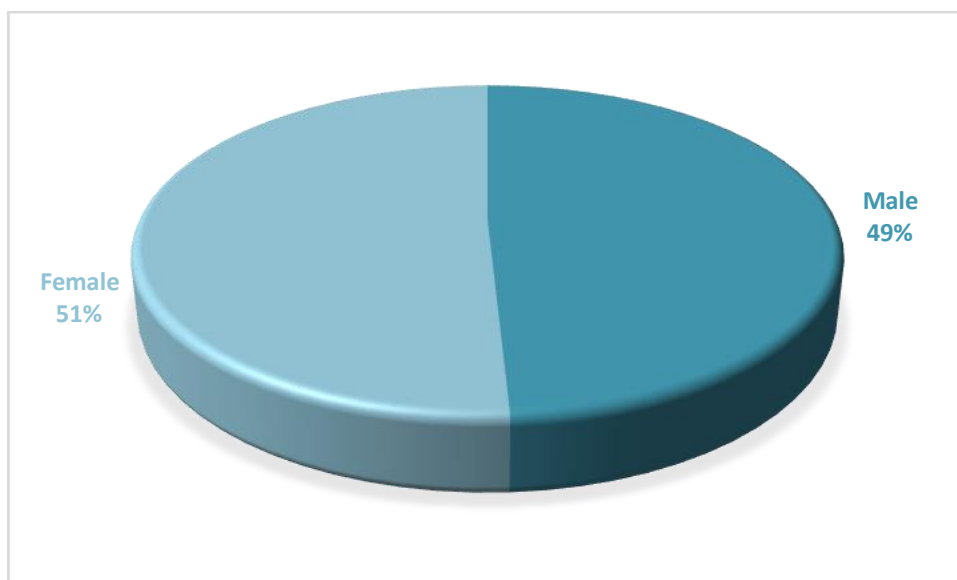
School Type	Public			Private			Total		
	Male	Female	Total	Male	Female	Total	Male	Female	Total
Primary	1178	1110	2288	824	809	1633	2002	1919	3921
Secondary	764	777	1541	253	305	558	1017	1082	2099
	1942	1887	3829	1077	1114	2191	3019	3001	6020

Table 4: The total school population not classified by gender and age

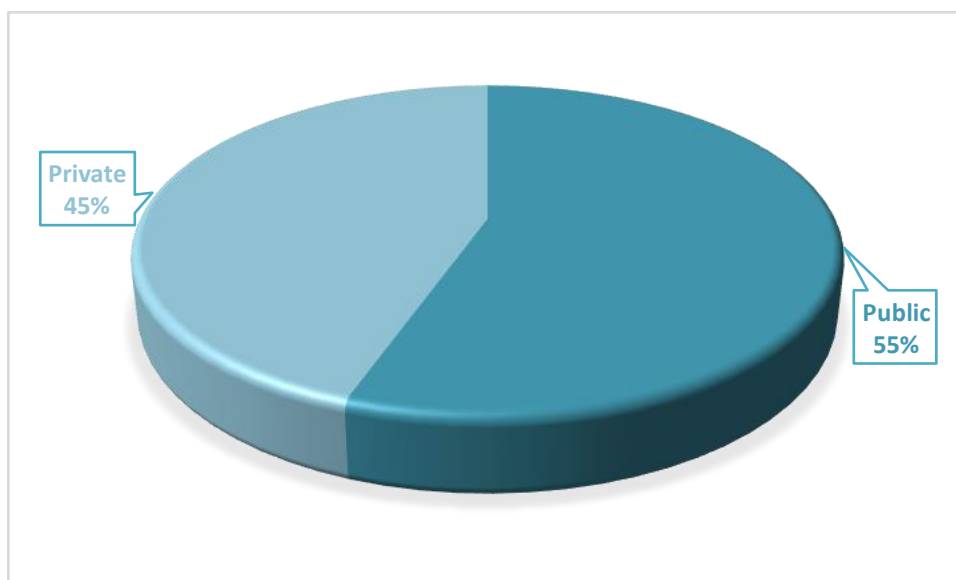
	Public	Private	Total
Primary	2375	1906	4281
Secondary	1542	614	2156
Total	3917	2520	6437



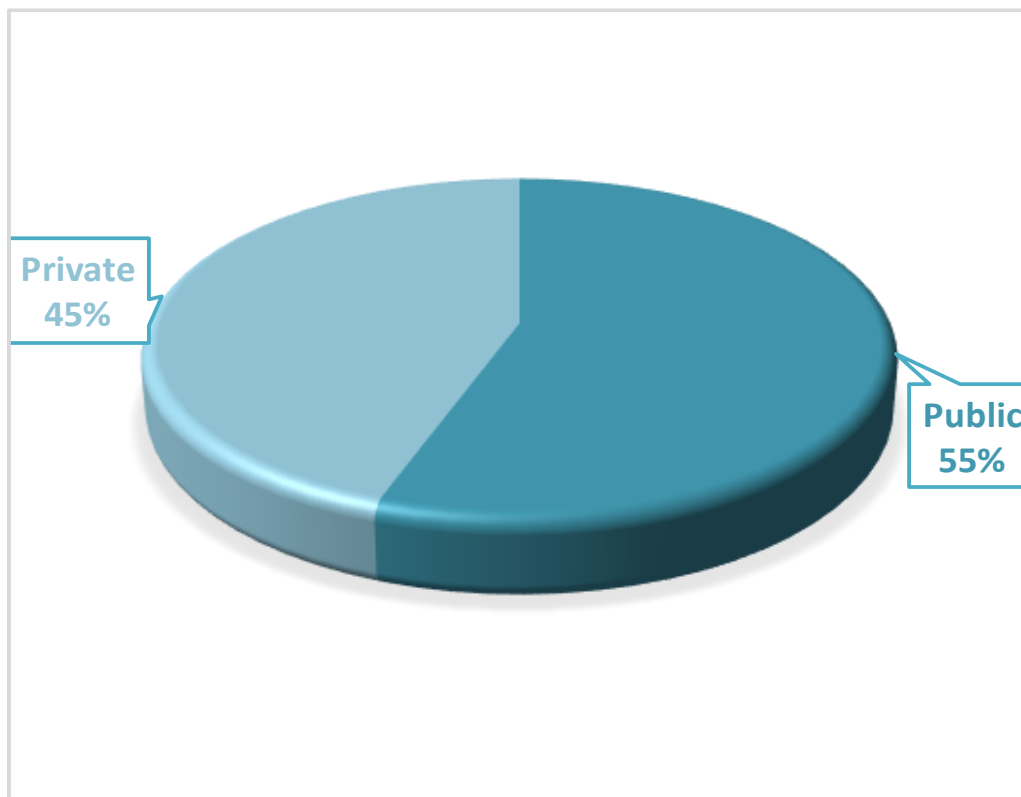
Graph 3: Distribution of students by Gender within Schools in the TCI



Graph 4: Distribution of students by Gender in Private Schools in the TCI



Graph 5: Distribution of Primary School students in Public and Private Schools



Graph 6: Distribution of students by Secondary students in Public and Private Schools

SECTION 2: STUDENT ENROLLMENT

Table 5: Private Primary Schools Enrollment by Grade

	Grades								
School Name	K1	K2	G1	G2	G3	G4	G5	G6	Total
Alpha	10	18	18	20	12	11	5	6	100
BEST	18	16	37	34	25	11	14	9	164
BRIC'S	3	2	3	0	4	0	0	0	12
Calvary Christian			12						12
Champions for Christ	2	5	5	7	4	2	4	6	35
Community Christian Academy	33	38	42	18	20	11	15	15	192
Faith Preparatory	6	11	7	5	5	1	5	0	40
Holy Family	12	12	12	13	11	10	6	6	82
International School of the TCI	20	16	14	18	12	11	16	6	113
Lighthouse Christian Academy	0	0	0	0					0
MILLS	41	40	25	48	22	22	13	10	221
Precious Treasures	18	0	24	15	13	8	10	9	97
Providence International	0	0	7	10	8	11	4	7	47
Providenciales Primary	15	19	14	16	14	13	18	15	124
Providenciales Christian	20	17	23	32	23	14	12	6	147
Richmond Hill	20	19	22	16	24	24	23	15	163
Shining Stars	27	21	27	23	43	25	16	10	192
Susanna Wesley	4	8	13	5	10	9	2	5	56
Wesley Methodist	14	11	20	20	15	21	3	5	109
Private Primary School Totals	263	253	325	300	265	204	166	130	1906

Table 6: Public Primary Schools Enrollment by Grade

	Grades								
School Name	K1	K2	G1	G2	G3	G4	G5	G6	TOTAL
Adelaide Omeler	9	13	12	10	9	8	16	14	91
Charles Hubert James	8	4	3	5	5	6	7	3	41
Doris Robinson	2	3	1		2			1	9
Eliza Simons	21	43	38	28	25	37	23	43	258
Enid Capron	57	53	55	82	59	57	79	90	532
Ianthe Pratt	63	54	55	62	80	77	75	93	559
Iris Stubbs	2	4	12	16	17	22	17	22	112
Mary Robinson			0						
Ona Ginton	32	25	48	38	34	35	43	34	290
Oseta Jolly	52	57	50	54	62	59	73	76	483
Public Primary Schools Totals	246	256	274	295	293	301	333	376	2375

Table 7: Public Secondary School Enrollment by Form

Public High Schools	Form 1	Form 2	Form 3	Form 4	Form 5	Form 6	Total
Clement Howell High School			193	187	185		565
HJ Robinson High School	73	75	47	75	74		344
Long Bay High School	215	231	0	0	0		428
Majorie Basden High School	18	19	19	18	18		92
Raymond Gardiner High School	18	22	28	23	22		113
Total Public Secondary Schools	324	347	287	303	299	0	1560

Table 8: Private Secondary School Enrollment by Form

PRIVATE ALL AGE	Form 1	Form 2	Form 3	Form 4	Form 5	Form 6	Totals
Calvary Christian	8	9	11	14	5	1	48
Holy Family	15	12	13	7	12	1	60
International School	8						8
Lighthouse Christian			1				1
Precious Treasures	8	4					12
Wesley Methodists	12	16	37	35	36		136
PRIVATE SECONDARY							
BWIC	44	34	20	13	24	21	156
Elite							
Marantha	29	25	29	33	26		142
TCI Middle School	12	12	12	6	5		47
TCIPs							
	136	112	123	108	108	23	610

Table 9: Secondary Level Students in the TCI by Gender, Grade and Age

Grades	Ages	Number of students		
		M	F	Total
Form 1	<11	5	5	10
	11	19	21	40
	12	92	128	220
	13	67	63	130
	14	19	10	29
	>14	1	2	3
Total		203	229	455
Form 2	<12	0	1	1
	12	34	44	78
	13	100	107	207
	14	70	46	116
	15	10	8	18
	>15	3	3	6
Total		217	209	438

Form 3	<13	0	0	0
	13	7	15	22
	14	47	61	108
	15	77	83	160
	16	54	57	111
	>16	5	3	8
Total		190	219	409
Form 4	<14	0	0	0
	14	7	6	13
	15	43	52	95
	16	73	93	166
	17	68	52	120
	>17	9	8	17
Total		200	211	411
Form 5	<15	1	3	4
	15	24	29	53
	16	83	36	119
	17	74	90	164
	18	15	38	53
	>18	3	3	6
Total		200	199	399
Form 6	<16	0	0	0
	16	0	1	1
	17	1	3	4
	18	3	3	6
	19	3	8	11
	>19	0	0	0
Total		7	15	23
	Total	1017	1082	2135

*This table takes into consideration that when reporting enrollment figures schools did not always disaggregate enrollment by age and gender and so the total figures are greater.

Table 10: Primary school students in the TCI by grade, age and gender

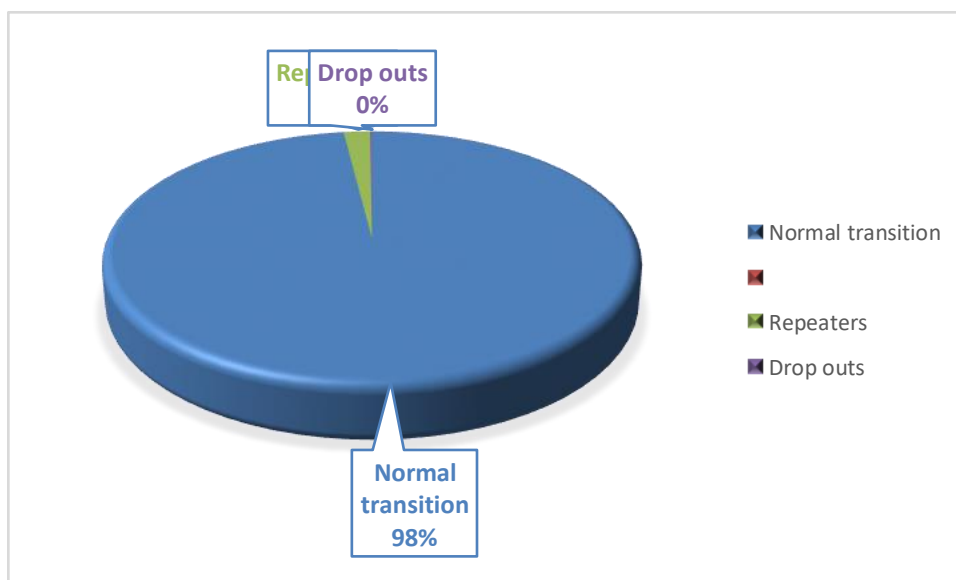
Grade	Age			
		M	F	Total
K1	<4	58	47	105
	4	136	149	285
	5	16	26	42
	6	9	13	22
Total		209	224	506
K2	<5	50	57	107
	5	144	138	282
	6	16	14	29
	7	3	3	6
	>7	0	0	0
Total		213	212	509
GR1	<6	67	73	140
	6	152	183	335
	7	58	48	106
	8	7	8	15
	>8	1	2	3
Total		285	314	599

GR2	<7	60	63	123
	7	163	172	335
	8	54	39	93
	9	4	8	12
	>9	2	0	1
Total		283	282	598
GR3	<8	27	30	57
	8	176	173	349
	9	53	53	106
	10	13	9	22
	>10	1	0	1

Total		270	265	558
GR4	<9	38	51	89
	9	173	151	324
	10	29	28	57
	11	7	2	9
	>11	2	0	2
Total		249	232	502
GR5	<10	58	55	113
	10	178	140	318
	11	33	24	57
	12	1	5	6
	>12	0	1	1
Total		270	225	506
GR6	<11	29	32	61
	11	133	120	253
	12	58	34	92
	13	9	3	12
	14	0	0	0
	>14	0	0	0
Total		229	189	520
	Total	2002	1919	4310*

Table 11: Number of student repeaters and drop outs in Primary Schools

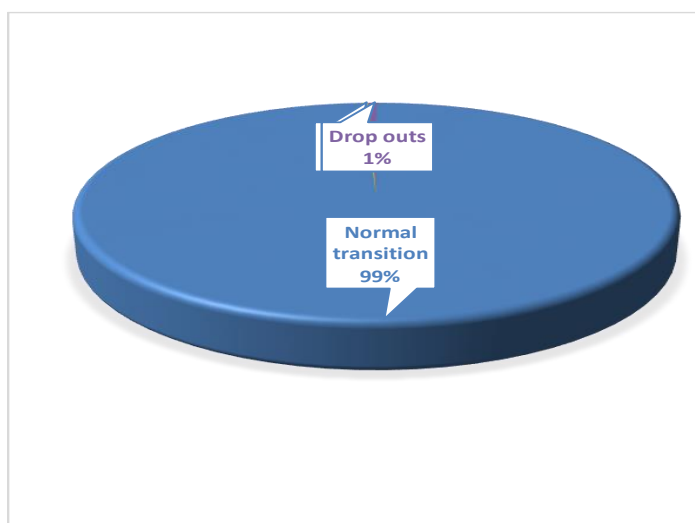
	Repeaters	Drop outs
Public Primary Schools	69	0
Private Primary Schools	10	7
TOTALS	79	7



Graph 7: Distribution of students transitioning normally, repeaters and drop outs in Primary Schools

Table 12: Number of student repeaters and drop out in Secondary Schools

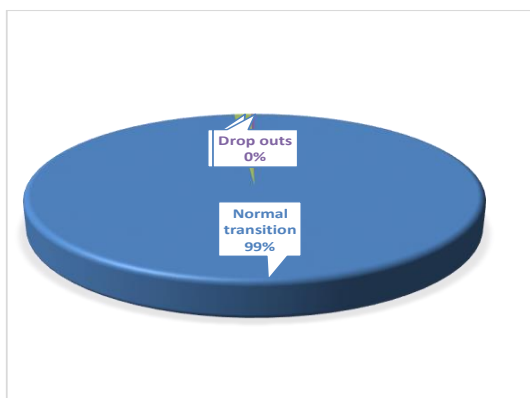
	Repeaters	Drop outs
Public Secondary Schools	1	7
Private Secondary Schools	7	4
TOTALS	8	11



Graph 8: Distribution of students transitioning normally, repeaters and drop outs in Secondary Schools

Table 13: Number of student repeaters and drop outs in TCI schools

	Repeaters	Drop outs
Public Schools	70	7
Private	17	11
TOTALS	87	18

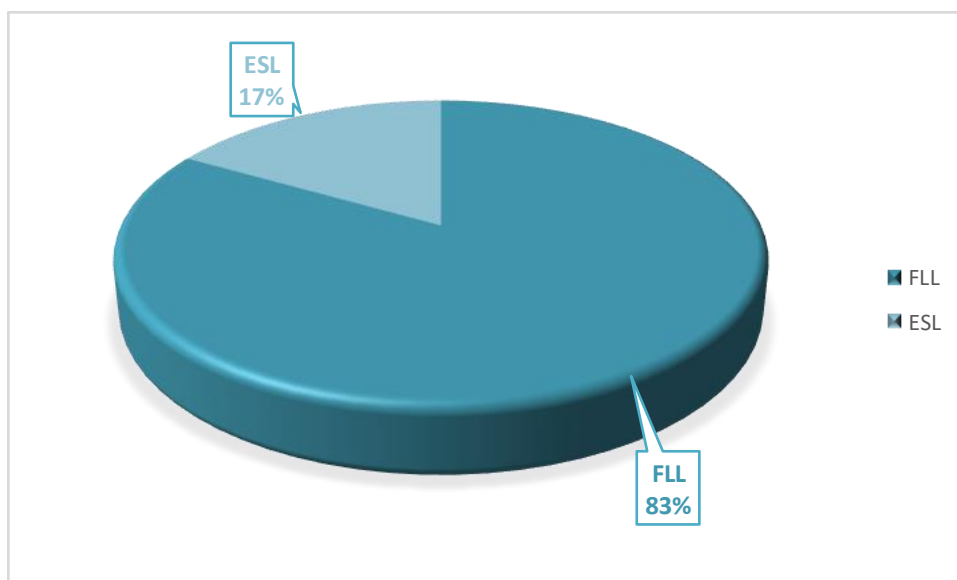


Graph 9: Distribution of students transitioning normally, repeaters and drop outs in the TCI

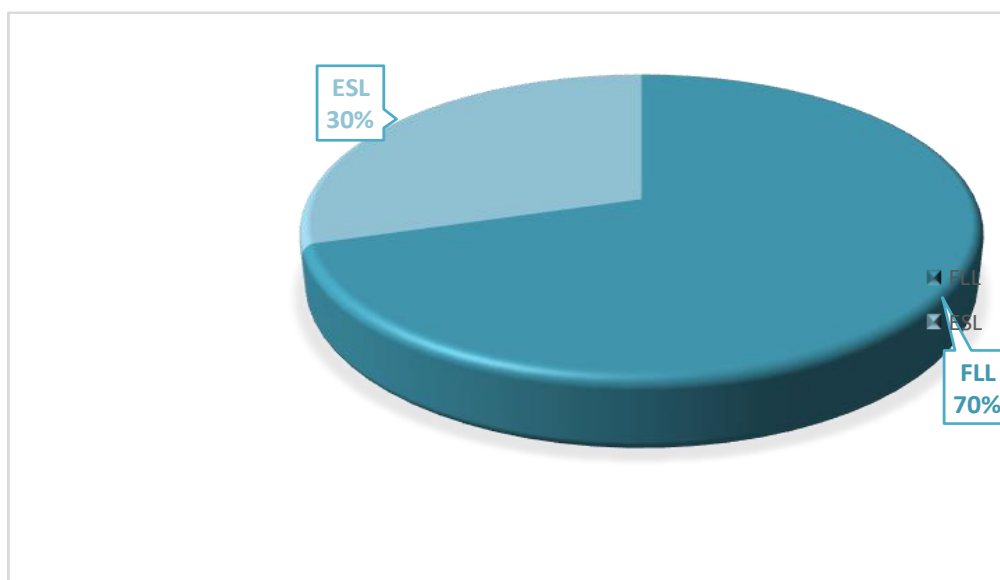
Table 14: Number of students with English as a Second Language

	Students with English as a Second Language
Public Primary Schools	897
Private Primary Schools	376
Public Secondary Schools	281
Private Secondary Schools	59
TOTAL	1273





Graph 10: Distribution of students with English as a Second Language (ESL) compared with First Language Learners (FLL) in the Turks and Caicos Islands



Graph 11: Distribution of students with English as a Second Language (ESL) compared with First Language Learners (FLL) in Primary Schools the Turks and Caicos Islands

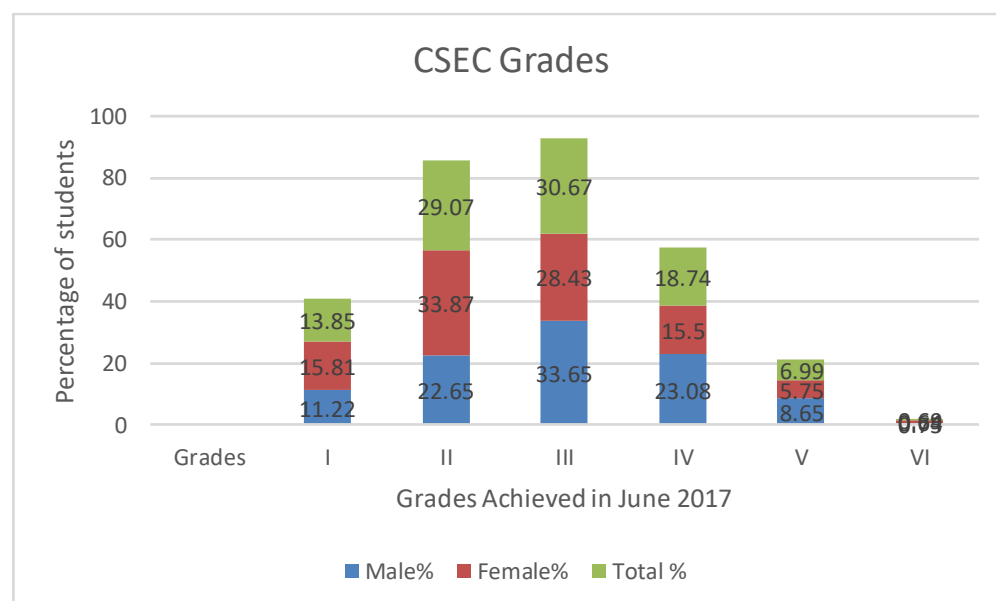
SECTION 3: EXAMINATION DATA

Table 15: Overall pass rates for Public and Private Grade Six Achievement Tests

Year	2014	2015	2016	2017
Public Schools	64.4	66.4	71.7	80.0
Private Schools	83.0	93.6	85.4	79.0
Overall	67.6	72.1	75.1	80.0

Table 16: CSEC Examination Results by Gender (June 2017)

	Grades	I	II	III	IV	V	VI	Entered	Sat	Other
Male		105	212	315	216	81	7	1022	936	86
Female		198	424	356	194	72	8	1349	1252	97
Total		303	636	671	410	153	15	2188	2188	183
	Grades	I	II	III	IV	V	VI			
Male%		11.22	22.65	33.65	23.08	8.65	0.75			
Female%		15.81	33.87	28.43	15.5	5.75	0.64			
Total %		13.85	29.07	30.67	18.74	6.99	0.69			



Graph 12: CSEC Examination Results by Gender (June 2017)

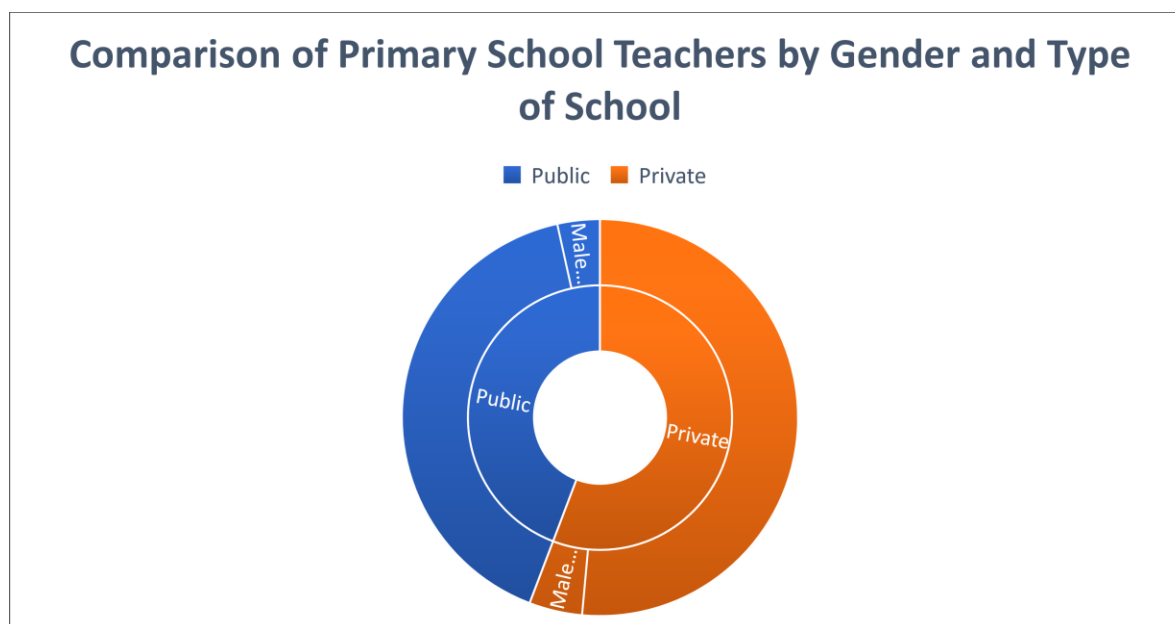
Table 17: CVQ Results (June 2017)

School	CVQ Programme	Number of students achieving level 1 units
Clement Howell High	Carpentry	2
HJ Robinson High School	Commercial Food Preparation	2
HJ Robinson High School	Data Operations	2

SECTION 4: TEACHERS' STATISTICS

Table 18: Number of teachers in primary schools by sector and gender

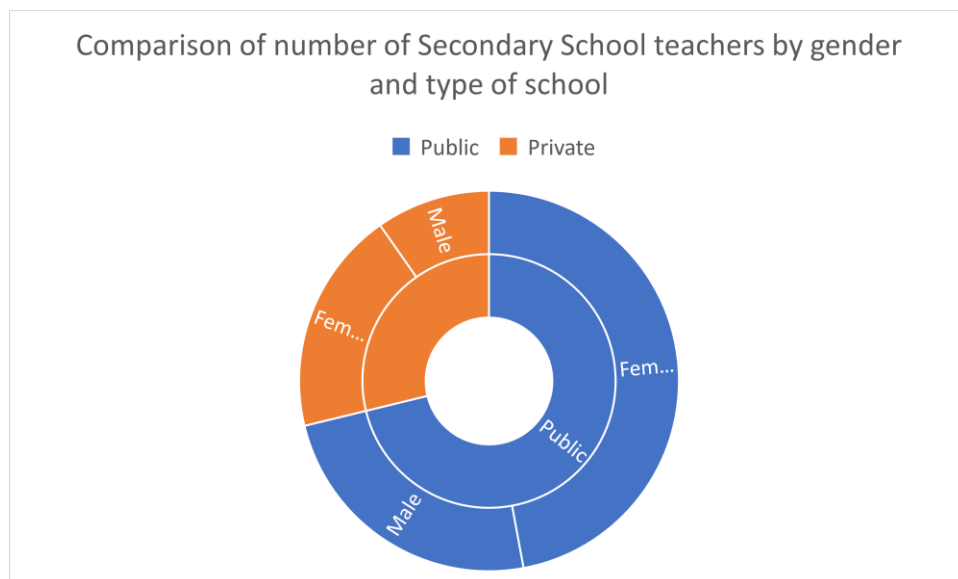
Public			Private		
Male	Female	Total	Male	Female	Total
12	141	153	15	178	193



Graph 13: Comparison of number of primary school teachers by gender and sector in the TCI

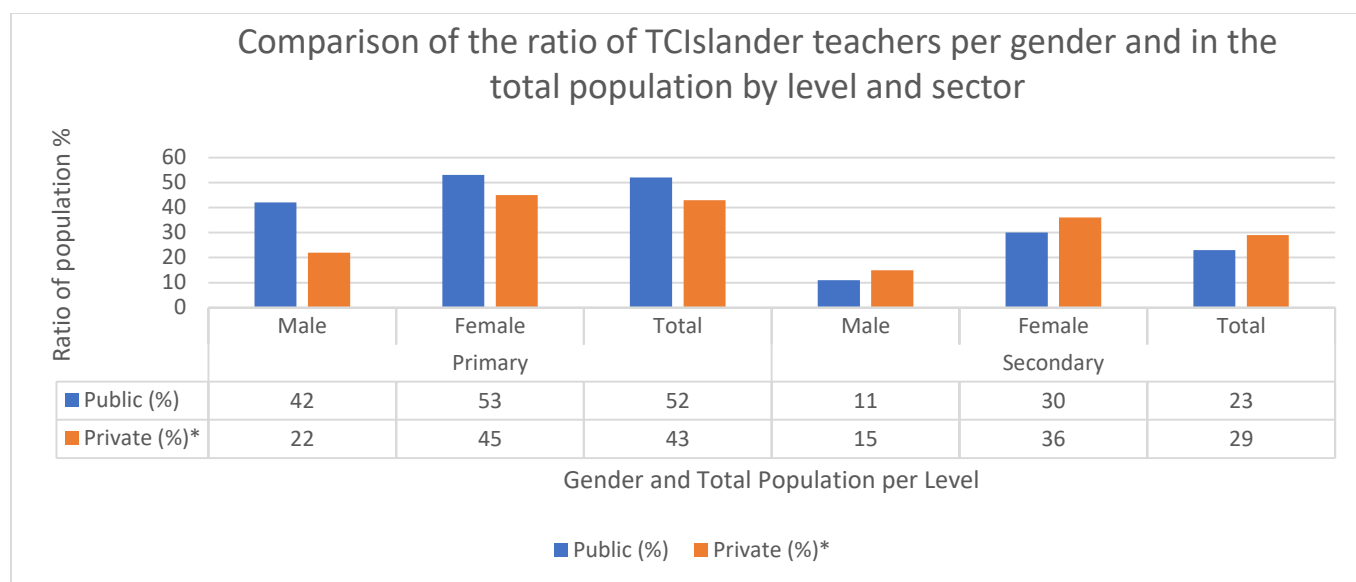
Table 19: Number of teachers in secondary schools by sector and gender

Public			Private		
Male	Female	Total	Male	Female	Total
62	121	183	25	49	74



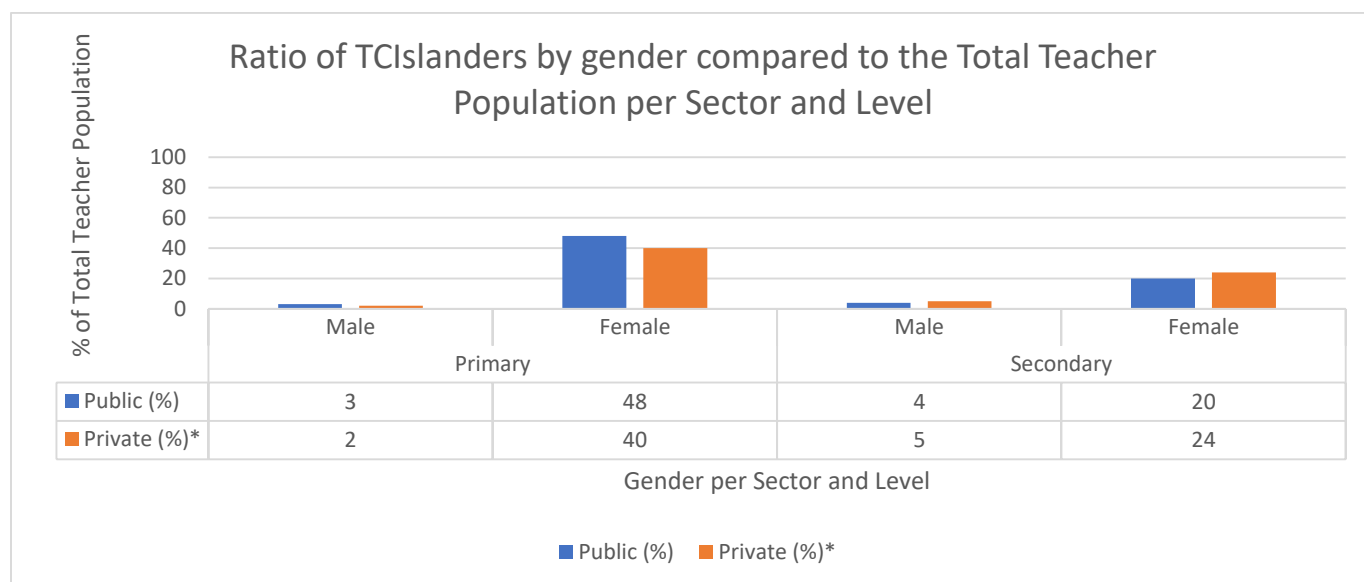
Graph 14: Comparison of number of secondary school teachers by gender and sector in the TCI





*Based on the submission of 8 of 17 primary schools and 3 of 6 secondary schools

Graph 15 - Comparison of TCIslander teachers compared by the total number of teachers of similar gender in primary and secondary schools by sector



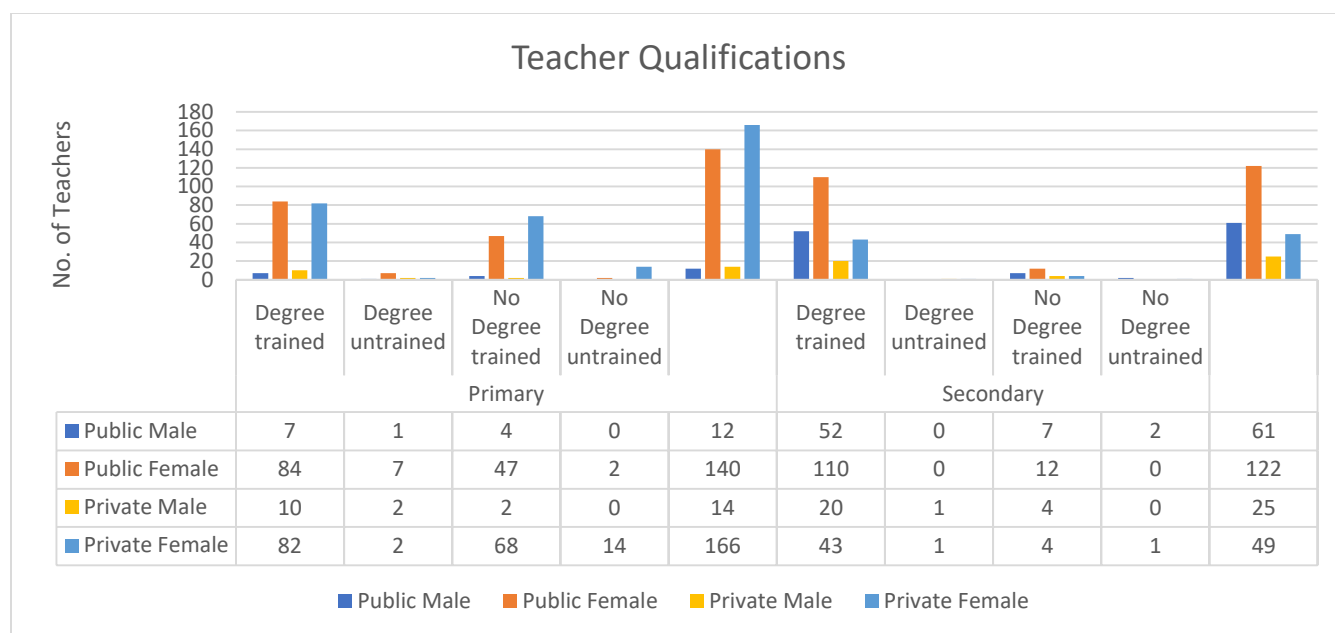
*Based on the submission of 8 of 17 primary schools and 3 of 6 secondary schools

Graph 16 – Comparison of TCIslander teachers by gender, sector and level to the Total Teachers Population

Table 20: Comparison of teacher qualification by level, gender and sector

		Public			Private			Total
		Male	Female	Total	Male	Female	Total	
Primary	Degree trained	7	84	91	10	82	92	183
	Degree untrained	1	7	8	2	2	4	12
	No Degree trained	4	47	51	2	68	70	121
	No Degree untrained	0	2	2	0	14	14	16
Total Primary		12	140	152	14	166	180	332
	Degree trained	52	110	162	20	43	63	225
	Degree untrained	0	0	0	1	1	2	2
	No Degree trained	7	12	19	4	4	8	27
	No Degree untrained	2	0	2	0	1	1	3
Total Secondary		61	122	183	25	49	74	257
Total Primary and Secondary		73	262	335	39	215	254	589





Graph 17: Comparison of teacher qualification by type of school, gender and sector

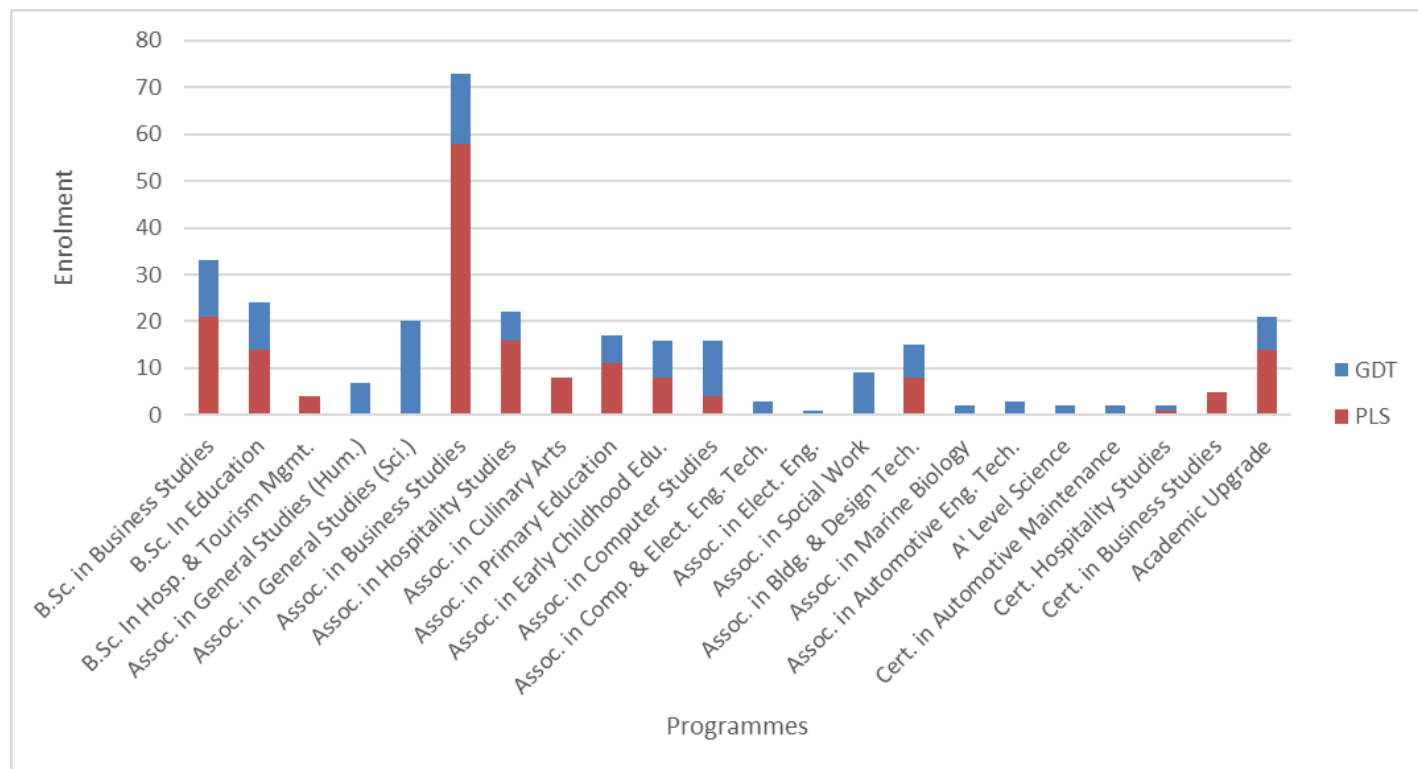


SECTION 5 – TERTIARY AND HIGHER EDUCATION

Table 20: TCI Community College Areas of Study for Grand Turk and Providenciales Campuses 2016/2017

Associate Degree/A-Levels Programs	Grand Turk	Providenciales	Total
General Studies (Science)	20	0	20
General Studies (Humanities)	7	0	7
Primary Education	6	11	17
Early Childhood Education	8	8	16
Business Studies	15	58	73
Hospitality	6	16	22
Culinary Arts	0	8	8
Computer Studies	12	4	16
Computer & Electronic Engineering Tech.	3	0	3
Automotive Engineering Technology	3	0	3
Electronic Engineering	1	0	1
Social Work	9	0	9
Building & Design Technology	7	8	15
Marine Biology	2	0	2
Advanced Levels (Science)	2	0	2
Bachelor Degree Programs			
Business Studies	12	21	33
Hospitality & Tourism Mgmt.	0	4	4
Education	10	14	24
Other			
Academic Upgrading	7	14	21
Certificate in Automotive Maintenance	2	0	3
Certificate in Hospitality Studies	1	1	0
Certificate in Business Studies	0	5	5
Total	133	172	305

Graph 15: Distribution of TCI Community College areas of study for Grand Turk and Providenciales campuses 2016/2017



Graph 16: Distribution of Tertiary Education Fund by year

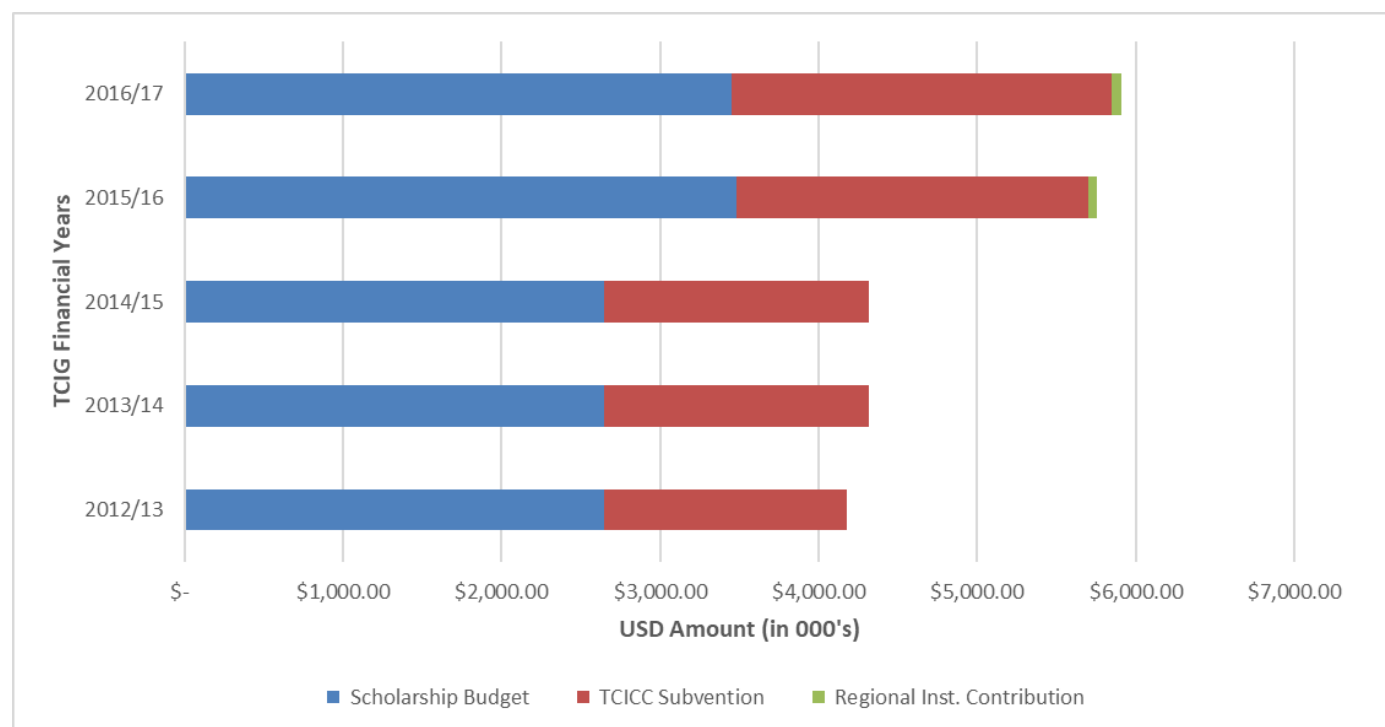


Table 21: TCICC Historical Graduation Data by Campus and Area of Study

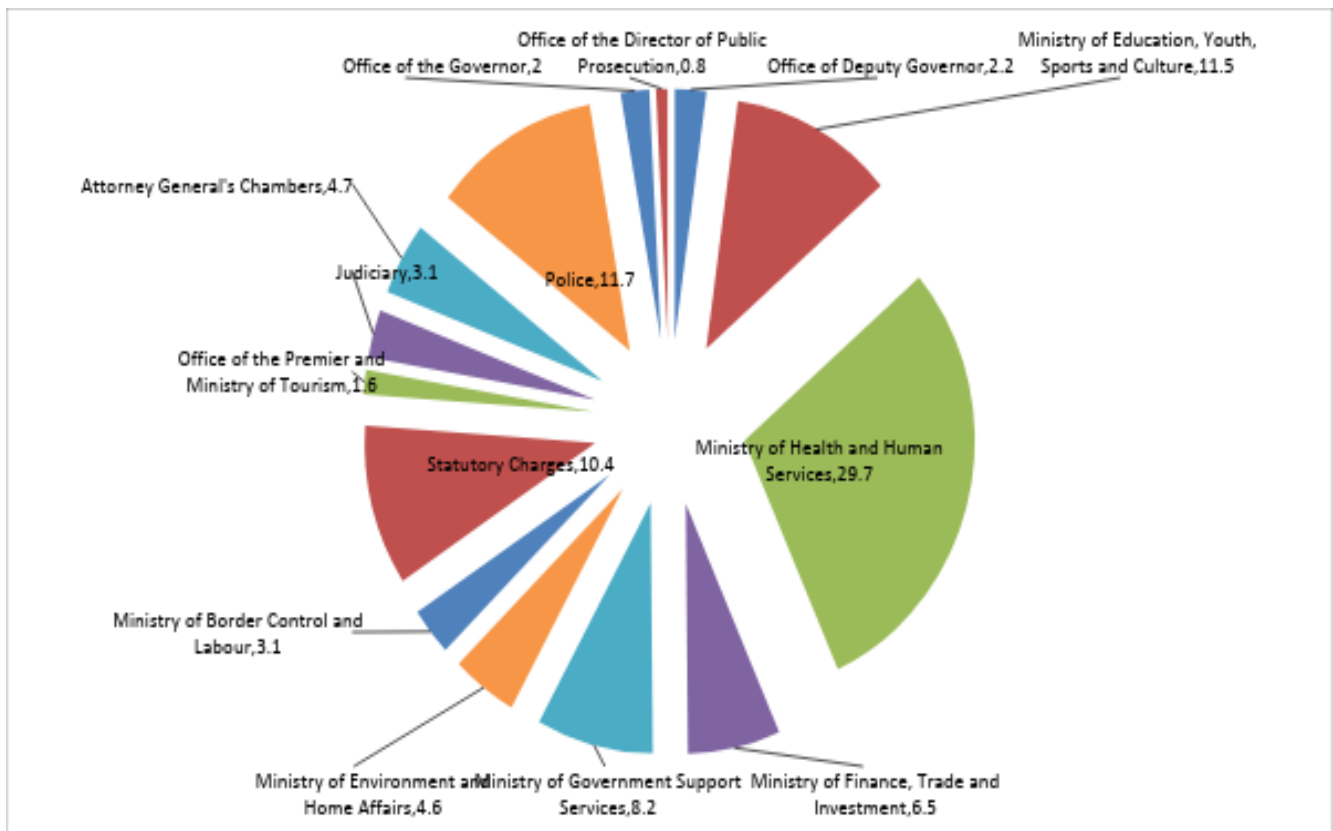
	2012	2013	2014	2015	2016
Total Graduates	55	95	-	84	72
Grand Turk Graduates	30	57	-	41	26
Providenciales Graduates	25	38	-	40	45
Graduates by Award Type					
Certificates Awarded	6	23	-	3	0
Areas of Certification*	BS, EET, HRM	BS, CA, EET, HOSP, HRM, SWW	-	BS, CA, EEET, HOSP, HRM, SWW	0
Associate Degrees Awarded	45	52	-	47	47
Associate Degrees Area of Concentration*	BDT, BS, CS, EET, GSH, GSS, HS, PE, PSM	BDT, BS, CEE, EET, ES, GSH, GSS	-	BDT, BS, CEE, EET, ES, GSH, GSS	BDT, BS, CS, CE. CuA, GSS, GSH, HS
Bachelor Degrees Awarded	0	0	-	31	26
Bachelor Degrees Area of Concentration	0	0	-	EP, BA, HOSP	FMGMT, HRM, ED, HOSP

*BS = business studies; BDT = building and designing technology; CA= computer applications; CAS = corporate administrative secretaryship; CN = clinical nursing; ECE = early childhood education; EEET = electrical/electronic engineering technology; ES = environmental studies; GSH = general humanities studies; GSS = general science studies; HRM = human resource management, HS = hospitality studies; PE = primary education; PSM = public sector management; SE = secondary education; SWW = social work and welfare.

SECTION 6 – BUDGET ESTIMATES

Table 21: Government of Turks and Caicos Islands (Estimated Budget for Education)

Programme /Department	2016/2017 Revised Estimates (USD)
Policy Planning and Administrations	9,386,824.00
Education Standards and Quality Assurance	505,569.00
Early Childhood Education	5,002,538.00
Primary Education	5,288,732.00
Secondary Education	12,717,590.00
Tertiary and Further Education	6,568,473.00
Youth Support Services	590,300.00
Sport Development and Participation	890,187.00
Library Services	463,607.00
TOTAL MINISTRY BUDGET CEILING	41,413,818.00
Ministry Budget Ceiling – Operating	29,578,818.00
Ministry Budget Ceiling - Capital	11,835,000.00
MINISTRY STAFFING RESOURCES - Actual Number of Staff by Category	
Executive/Managerial	35
Technical/Front Line Services	361
Administrative Support	32
Wages Staff	30
TOTAL AGENCY STAFFING	458



Graph 18: Proportion of National Budget allocation for Education